

TREE LEGEND

- TREE TO BE PROTECTED DURING CONSTRUCTION
- TREE TO BE PROTECTED DURING CONSTRUCTION IF POSSIBLE. IF NOT FEASIBLE, TREE TO BE REPLACED WITH SPECIES INDICATED
- NEW TREE TO REPLACE EXISTING INFERIOR OR MISSING STREET TREE
- GROUND COVER PLANTINGS AROUND TREES #1 AND #2 (HATCH ALSO INDICATES OTHER AREAS OF ENHANCED PLANTINGS - SEE PLANT LABELS FOR DETAILS).

TREE INVENTORY

- #1 - 20" SHADEMASTER HONEYLOCUST IN GOOD HEALTH. TREE TO REMAIN AND BE PROTECTED.
 - #2 - 20" SHADEMASTER HONEYLOCUST IN GOOD HEALTH. TREE TO REMAIN AND BE PROTECTED.
 - #3 - 14" SHADEMASTER HONEYLOCUST IN FAIR HEALTH. REPLACE WITH 3" LONDON PLANE TREE.
 - #4 - 6" GREEN ASH. REPLACE WITH 3" LONDON PLANE TREE AND WAYFINDING ELEMENT WITH SPECIAL PAVING. TWO TREES WON'T FIT DUE TO EXISTING FIRE LINE.
 - #5 - 4" GREEN ASH. REPLACE WITH 3" LONDON PLANE TREE.
 - #6 - 14" SHADEMASTER HONEYLOCUST IN GOOD HEALTH. TREE TO REMAIN AND BE PROTECTED IF FEASIBLE. IF NOT, REPLACE WITH 3" LONDON PLANE TREE.
 - #7 - 14" SHADEMASTER HONEYLOCUST IN GOOD HEALTH. TREE TO REMAIN AND BE PROTECTED IF FEASIBLE. IF NOT, REPLACE WITH 3" LONDON PLANE TREE.
 - #8 - 6" SHADEMASTER HONEYLOCUST IN FAIR HEALTH. REPLACE WITH 3" LONDON PLANE TREE.
 - #9 - 8" SHADEMASTER HONEYLOCUST IN GOOD HEALTH. TREE TO REMAIN AND BE PROTECTED IF FEASIBLE. IF NOT, REPLACE WITH 3" LONDON PLANE TREE.
 - #10 - 12" SHADEMASTER HONEYLOCUST IN GOOD HEALTH. TREE TO REMAIN AND BE PROTECTED IF FEASIBLE. IF NOT, REPLACE WITH 3" LONDON PLANE TREE.
 - #11 - 2" HACKBERRY WITH TREE GUARD. CAN BE REPLACED WITH 3" HACKBERRY IF REMOVED FOR CONSTRUCTION.
 - #12 - 13" SHADEMASTER HONEYLOCUST IN GOOD HEALTH. TREE TO REMAIN AND BE PROTECTED IF FEASIBLE. IF NOT, REPLACE WITH 3" HACKBERRY.
 - #13 - 2" HACKBERRY WITH TREE GUARD. CAN BE REPLACED WITH 3" HACKBERRY IF REMOVED FOR CONSTRUCTION.
 - #14 - 9" SHADEMASTER HONEYLOCUST IN GOOD HEALTH. TREE TO REMAIN AND BE PROTECTED IF FEASIBLE. IF NOT, REPLACE WITH 3" HACKBERRY.
 - #15 - 9" V IN GOOD HEALTH. TREE TO REMAIN AND BE PROTECTED IF FEASIBLE. IF NOT, REPLACE WITH 3" HACKBERRY.
- REPLACE ALL TREES ON WALNUT - ALL ARE IN POOR HEALTH AND REMOVAL AND REPLACEMENT IS PREFERRED BY FORESTRY.

TREE INVENTORY NOTES:

- 1. TREE INVENTORY INFORMATION CONTAINED HEREIN IS FROM SITE WALK WITH CITY FORESTERS ON DECEMBER 16, 2011.
- 2. TREES WITH GOOD HEALTH ON PEARL STREET AND 11TH STREET SHOULD REMAIN AND BE PROTECTED DURING CONSTRUCTION IF FEASIBLE. IF NOT FEASIBLE, REPLACE TREES WITH 3" CALIPER TREES OF SPECIES INDICATED. REPLACE ALL TREES ON WALNUT.
- 3. ALL EXISTING (TO REMAIN) AND PROPOSED STREET TREES TO HAVE NEW 4 X 10 GRATES PER CITY STANDARD [EXCEPT TREES #1 AND #2]. TREE GRATE INSTALLATION TO BE COORDINATED WITH CITY FORESTER. IF TREES CAN'T BE PROTECTED ALONG WALNUT AND PEARL, ALIGN NEW TREE GRATES. IF EXISTING TREES REMAIN, INSTALL THE TREE GRATES TO BE CENTERED ON EXISTING TREE (PLAN IS CURRENTLY SHOWN WITH TREES REMAINING).
- 4. TWO TREES AT NORTHWEST CORNER OF PROPERTY TO BE PROTECTED DURING CONSTRUCTION AND NOT REPLACED.
- 5. REFER TO THE CITY OF BOULDER DESIGN AND CONSTRUCTION STANDARDS FOR TREE PROTECTION REQUIREMENTS.

PLANTING NOTES:

- 1. ALL PLANT MATERIAL SHALL MEET SPECIFICATIONS OF THE AMERICAN ASSOCIATION OF NURSEYMEN (AAN) FOR NUMBER ONE GRADE. ALL TREES SHALL BE BALLED AND BURLAPPED OR EQUIVALENT. ALL PLANT MATERIALS SHALL HAVE ALL WIRE, TWINE OR OTHER CONTAINMENT MATERIALS, EXCEPT FOR BURLAP, REMOVED FROM TRUNK AND ROOT BALL OF THE PLANT PRIOR TO PLANTING.
- 2. TREES SHALL NOT BE PLANTED CLOSER TO ANY PUBLIC SEWER OR WATER LINE EXCEPT WHERE EXISTING TREE IS LOCATED CLOSER AND MUST BE REPLACED. TREE PLANTING SHALL BE COORDINATED WITH PUBLIC SERVICE COMPANY. LOCATIONS OF ALL UTILITIES SHALL BE VERIFIED IN THE FIELD PRIOR TO PLANTING.
- 3. ALL SHRUBS SHALL BE PLANTED NO LESS THAN 3' FROM ANY SIDEWALK OR CURB.
- 4. GRADES SHALL BE SET TO ALLOW FOR PROPER DRAINAGE AWAY FROM STRUCTURES.
- 5. OWNERS SHALL ENSURE THAT THE LANDSCAPE PLAN IS COORDINATED WITH THE PLANS DONE BY OTHER CONSULTANTS SO THAT THE PROPOSED GRADING, STORM DRAINAGE, OR OTHER CONSTRUCTIONS DOES NOT CONFLICT NOR PRECLUDE INSTALLATION AND MAINTENANCE OF LANDSCAPE ELEMENTS ON THIS PLAN.
- 6. ALL SHRUB BED AREAS, PERENNIALS AND GROUND COVER SHALL BE MULCHED WITH A 4" LAYER OF GORILLA HAIR (SHREDED CEDAR) MULCH. NO WEED BARRIER FABRIC IS TO BE USED IN PLANTING AREAS, WITH THE EXCEPTION OF THE SOIL SEPARATION NEEDED IN THE ROOF DECK PLANTERS (BETWEEN GRAVEL AT BOTTOM AND PLANTERS MIX/SOIL ABOVE).
- 7. PRIOR TO INSTALLATION OF PLANT MATERIALS, AREAS THAT HAVE BEEN COMPACTED OR DISTURBED BY CONSTRUCTION ACTIVITY SHALL BE THOROUGHLY LOOSENEED; ORGANIC SOIL AMENDMENTS SHALL BE INCORPORATED AT THE RATE OF AT LEAST FOUR (4) CUBIC YARDS PER 1000 SQUARE FEET OF LANDSCAPE AREA.
- 8. ALL LANDSCAPE (PLANT MATERIALS AND GRASS) WILL BE IRRIGATED WITH AN AUTOMATIC DRIP IRRIGATION SYSTEM. ADD DRIP IRRIGATION TO EACH EXISTING TREE TO REMAIN (TWO EMITTERS PER TREE).
- 9. PLANTS ARE GROUPED BY WATER USE ZONE TO CONSERVE WATER.
- 10. CONTRACTOR SHALL VERIFY ALL MATERIAL QUANTITIES PRIOR TO INSTALLATION. ACTUAL NUMBER OF PLANT SYMBOLS SHALL HAVE PRIORITY OVER THE QUANTITY DESIGNATED.
- 11. REFER TO THE CITY OF BOULDER DESIGN AND CONSTRUCTION STREETScape STANDARDS FOR ALL WORK WITHIN PUBLIC AREAS. COORDINATE TREE GRATE INSTALLATION WORK WITH THE CITY FORESTER.
- 12. REFER TO THE CIVIL ENGINEER DRAWINGS FOR GRADING AND UTILITY INFORMATION.
- 13. REFER TO THE CITY OF BOULDER DESIGN AND CONSTRUCTION STANDARDS FOR TREE PROTECTION REQUIREMENTS.

STREETScape (R.O.W.) PAVING NOTES:

- 1. CONTRACTOR TO MATCH PAVING MATERIALS, PAVING CONSTRUCTION DETAILS, AND OTHER PERTINENT ITEMS WITH THE WEST PEARL STREETScape PROJECT.
- 2. BRICK PAVING TO MATCH BRICK ON PEARL STREET MALL. THE BRICK DETAIL IS 6" CONCRETE SUB-BASE WITH DRAIN HOLES, BEDDING COURSE AND 2.25" BRICK PAVER.
- 3. STONE PAVING DETAIL IS THE SAME AS ABOVE, BUT WITH A 2.5" STONE PAVER. THE VARIANCE COMES OUT OF THE BEDDING COURSE. STONE PAVERS ARE "COLORADO BUFF SANDSTONE" AND "LYONS RED SANDSTONE," NATURAL CLEFT FINISH, SAWCUT EDGES, AND .25" SAND SWEEP JOINTS.
- 4. CONCRETE FINISH IS A LIGHT BROOM FINISH PERPENDICULAR.

Date: 01.15.2014

Project Name:

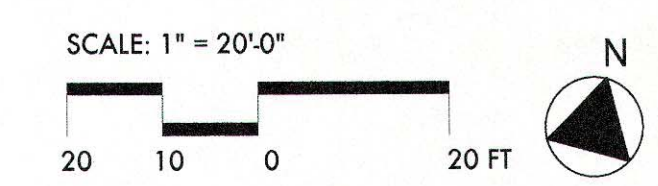
Issued For / Phase: TECH DOCS

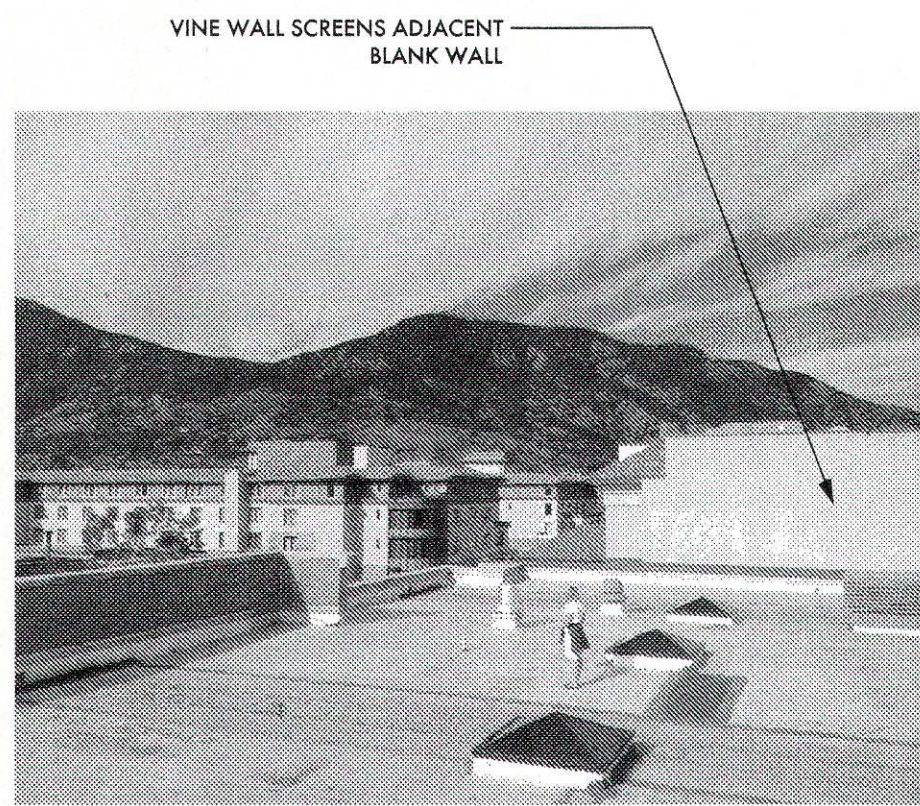
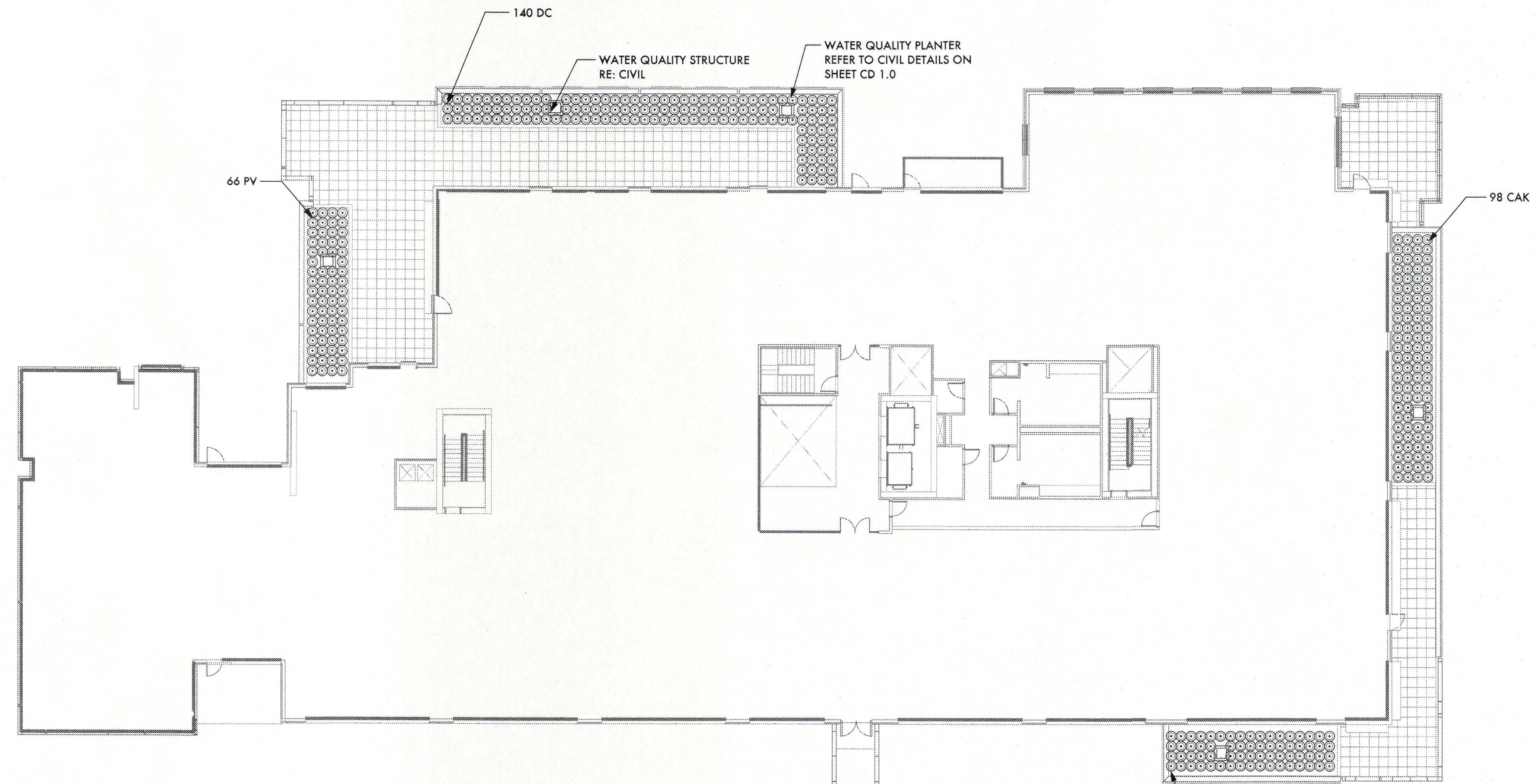
Revisions:

No.	Date	Remarks
-----	------	---------

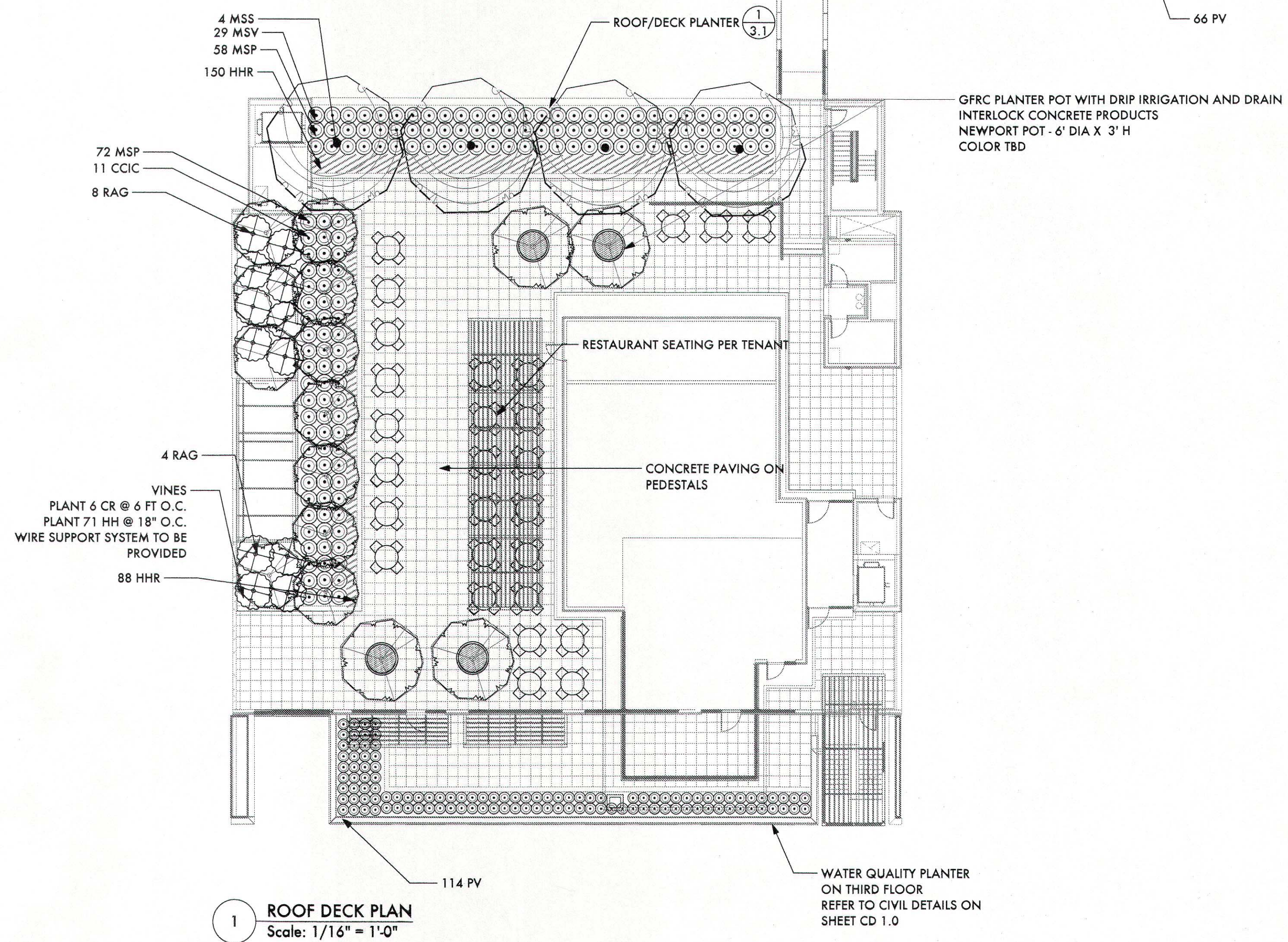
Sheet Name: LANDSCAPE PLAN

Sheet Number: L1.0

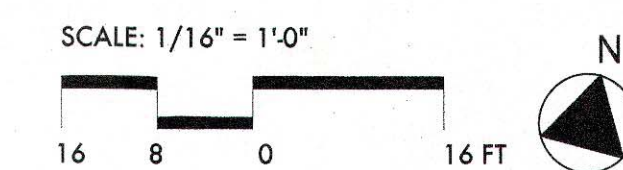




VINE WALL SCREENS ADJACENT BLANK WALL



1 ROOF DECK PLAN
Scale: 1/16" = 1'-0"



Date: 01.15.2014

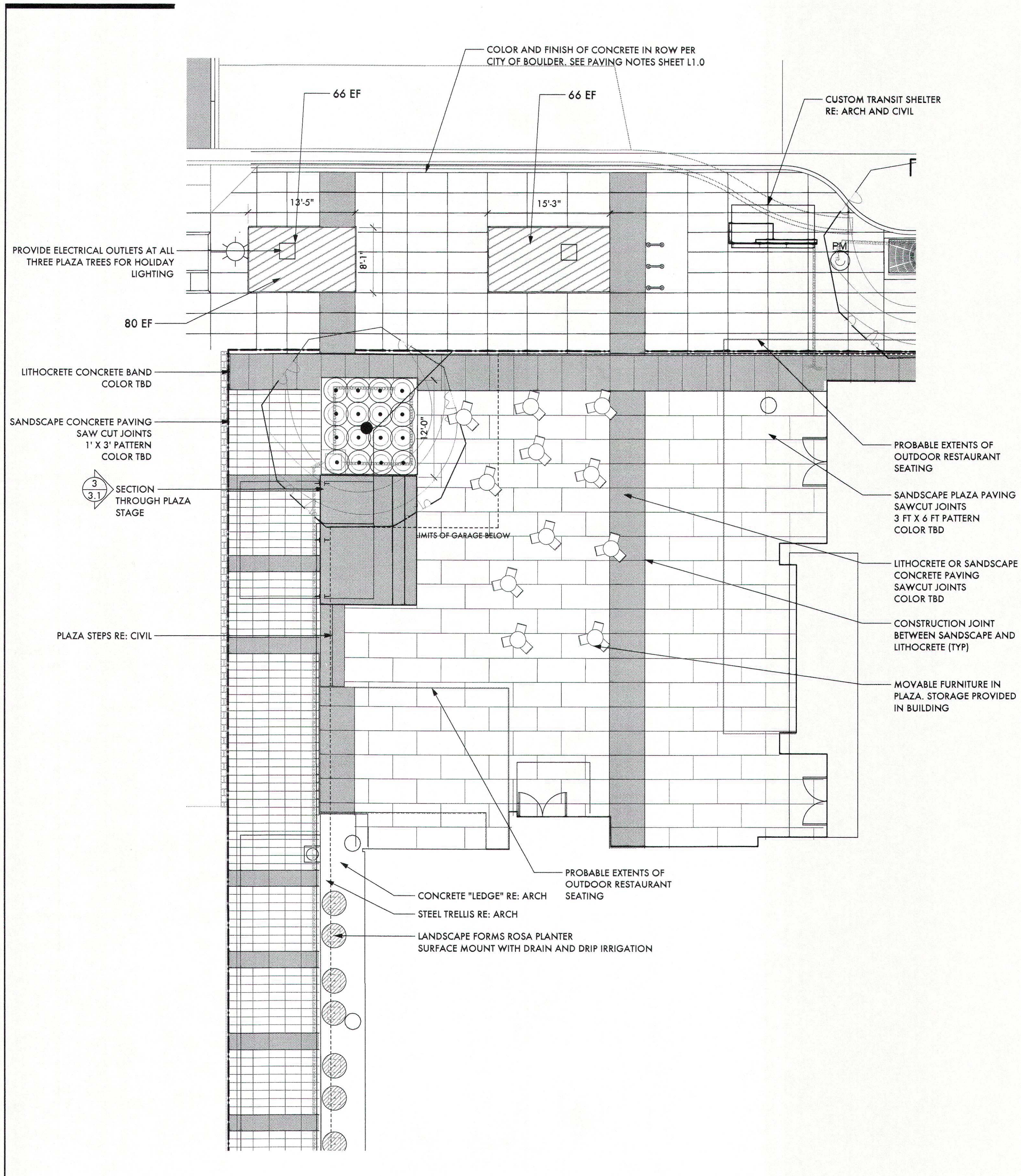
Project Name:

Issued For / Phase:
TECH DOCS

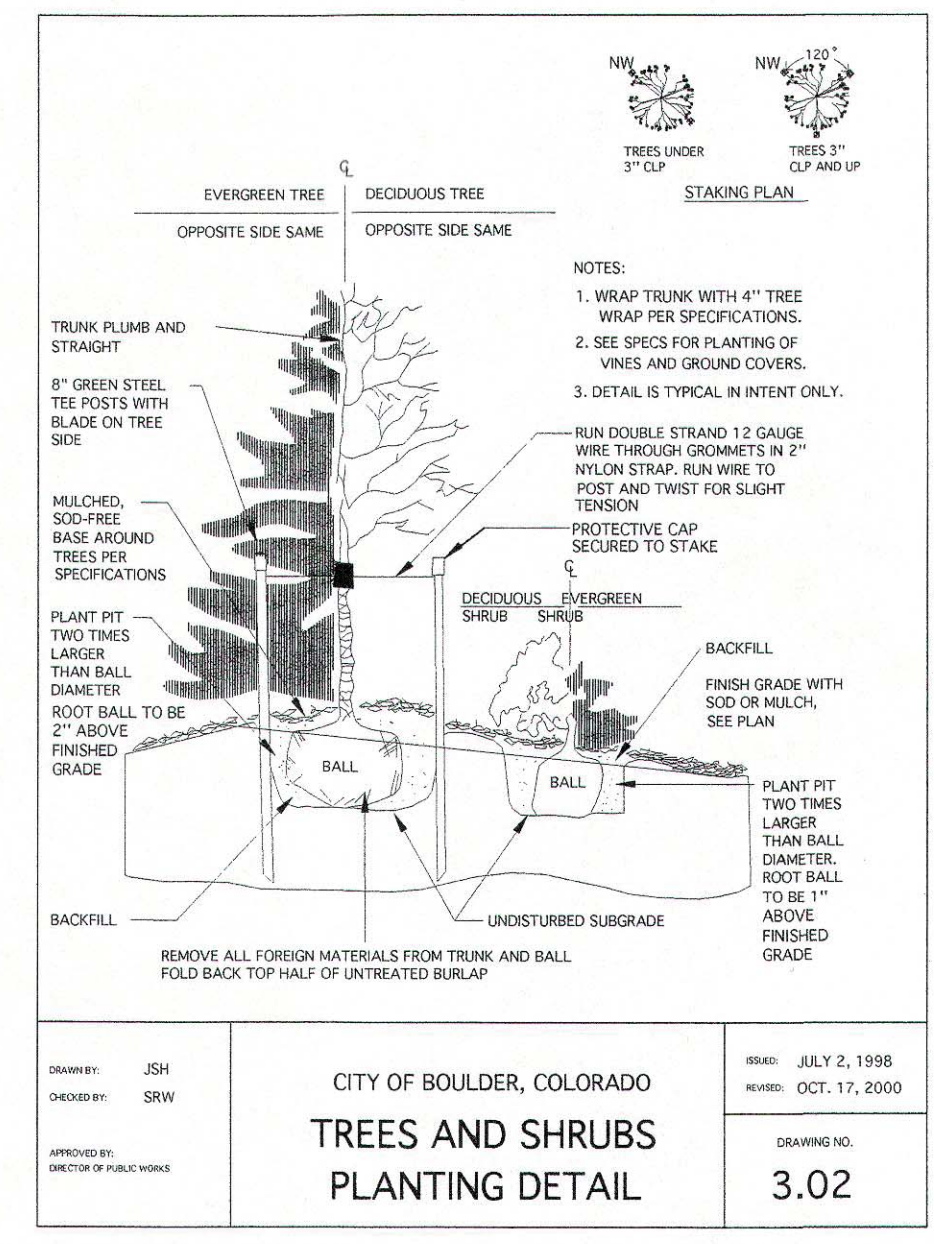
No.	Date	Remarks

Sheet Name:
ROOF DECK PLAN

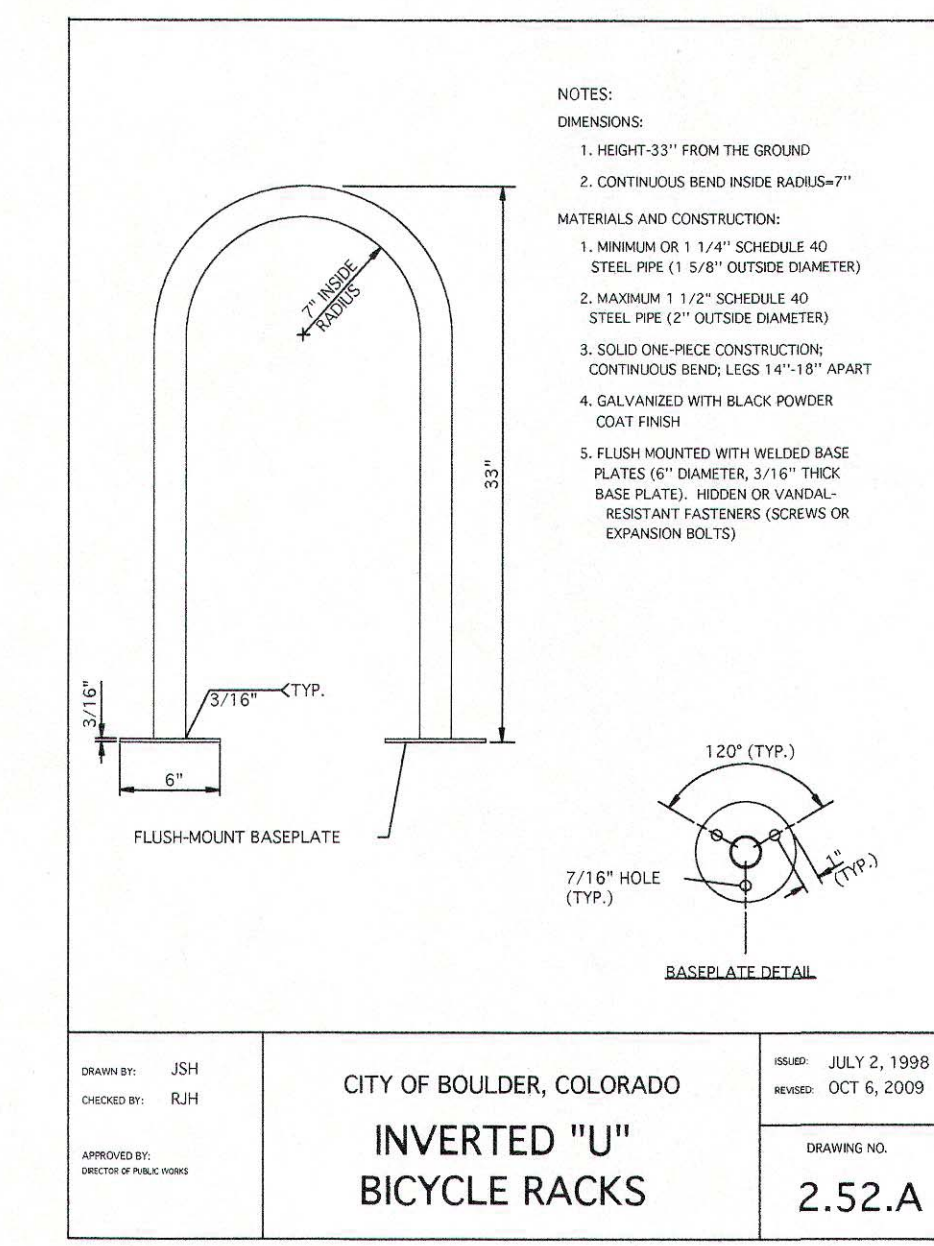
Sheet Number:
L2.0



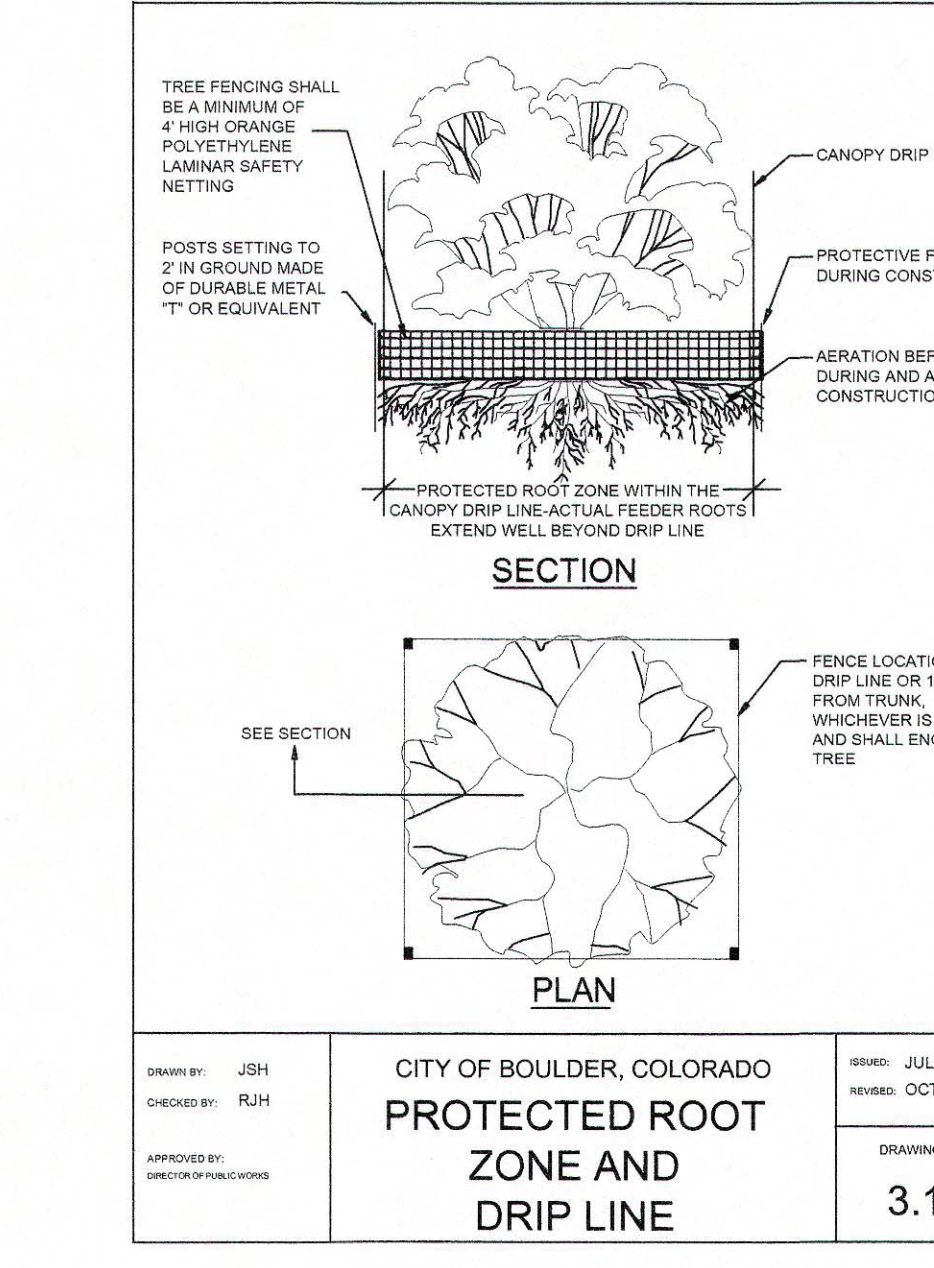
1 PLAZA ENLARGEMENT PLAN
Scale: 1/8" = 1'-0"



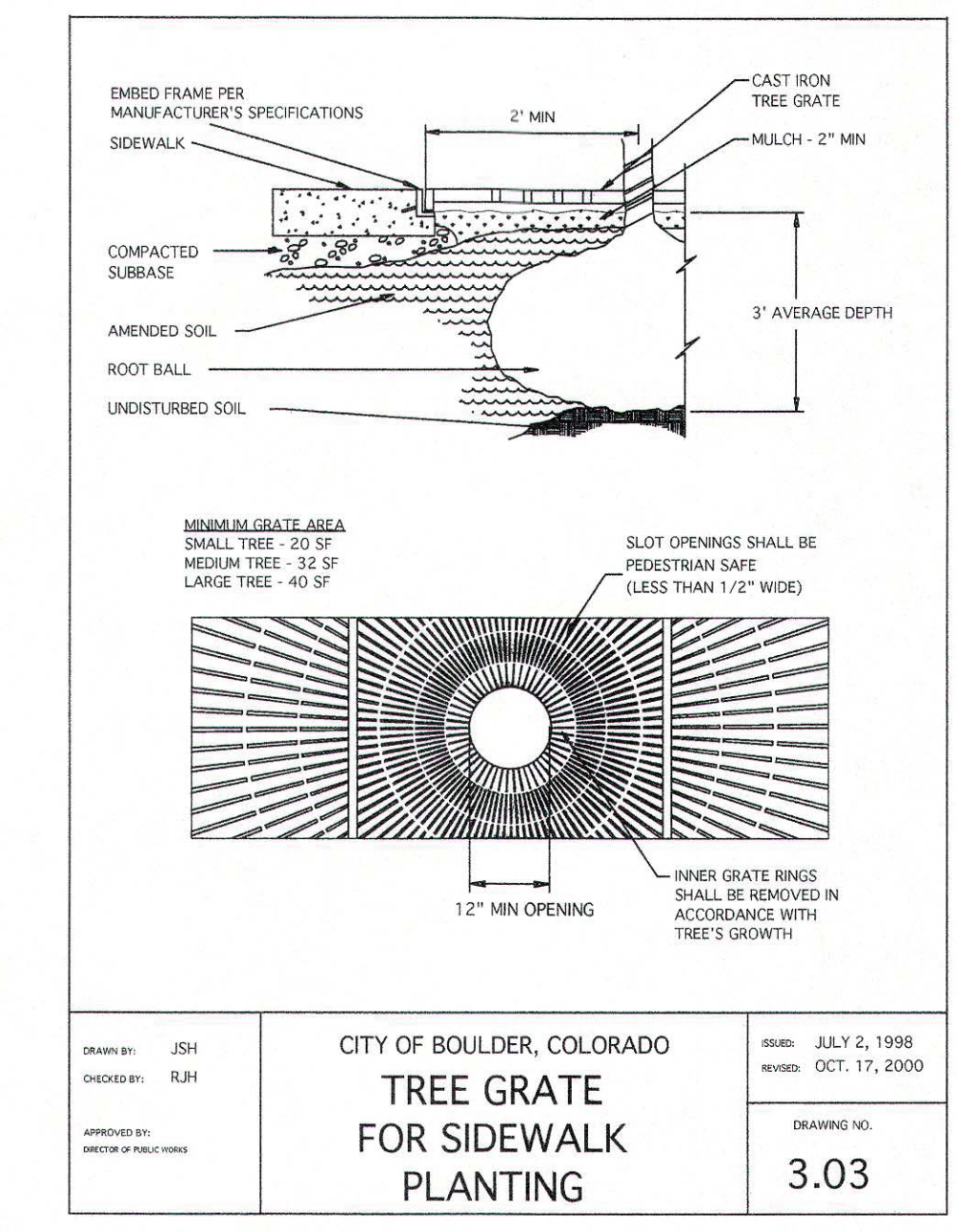
1 TREE AND SHRUB PLANTING DETAIL
SCALE: not to scale



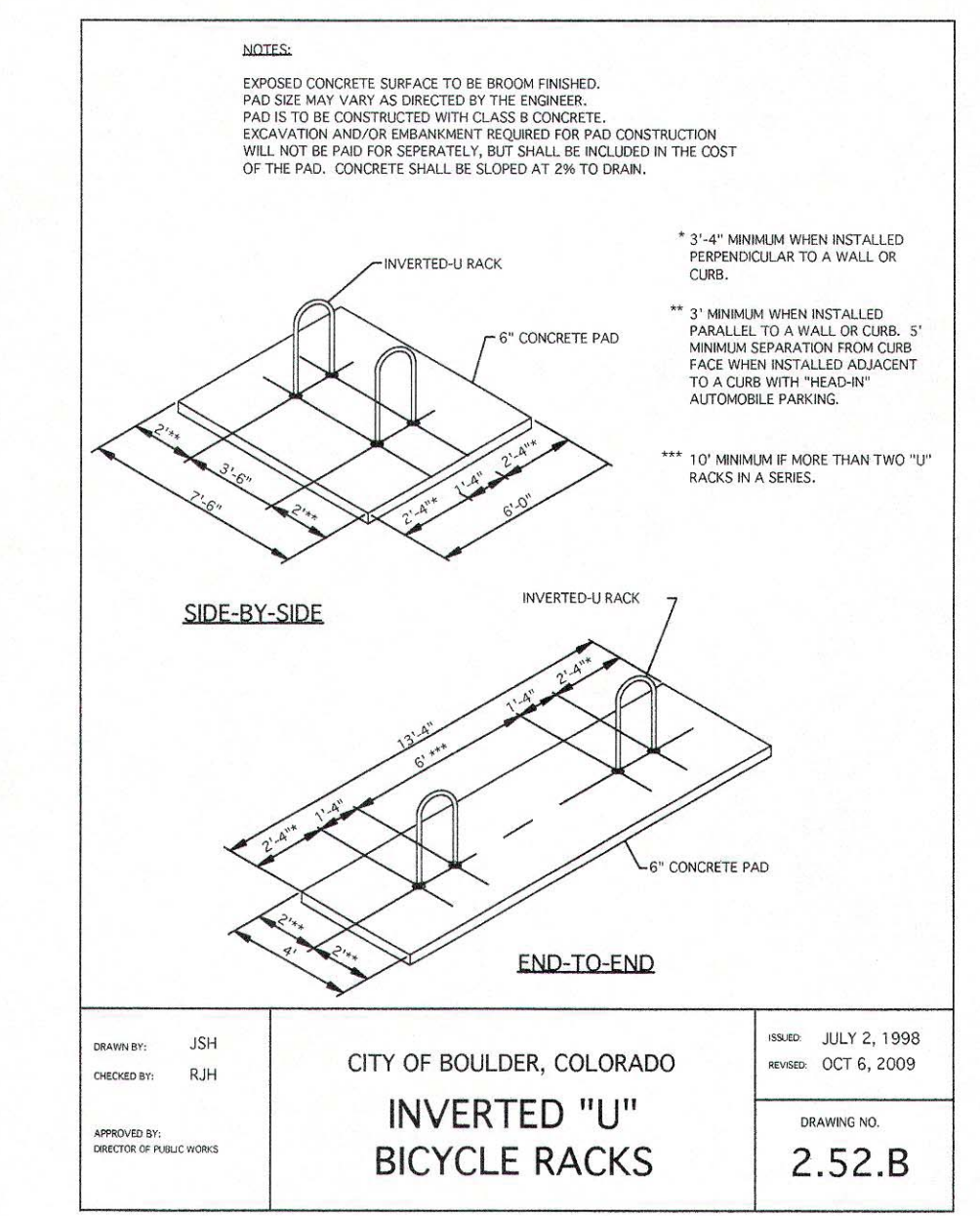
3 INVERTED - U BIKE RACKS
SCALE: not to scale



5 TREE PROTECTION DETAIL
SCALE: not to scale



2 4 FT X 10 FT TREE GRATE
SCALE: not to scale



4 INVERTED - U BIKE RACKS - LAYOUT
SCALE: not to scale

NOTES:
TREE GRATE TO BE: NEENAH FOUNDRY 4'X10' TREE GRATE AND FRAME (NO. R-8815-B)

TREE GUARD TO BE: NEENAH FOUNDRY 4' GUARD TYPE A (NO. 996-2298)

PROVIDE SHOP DRAWINGS FOR APPROVAL PRIOR TO ORDERING

Date: 01.15.2014

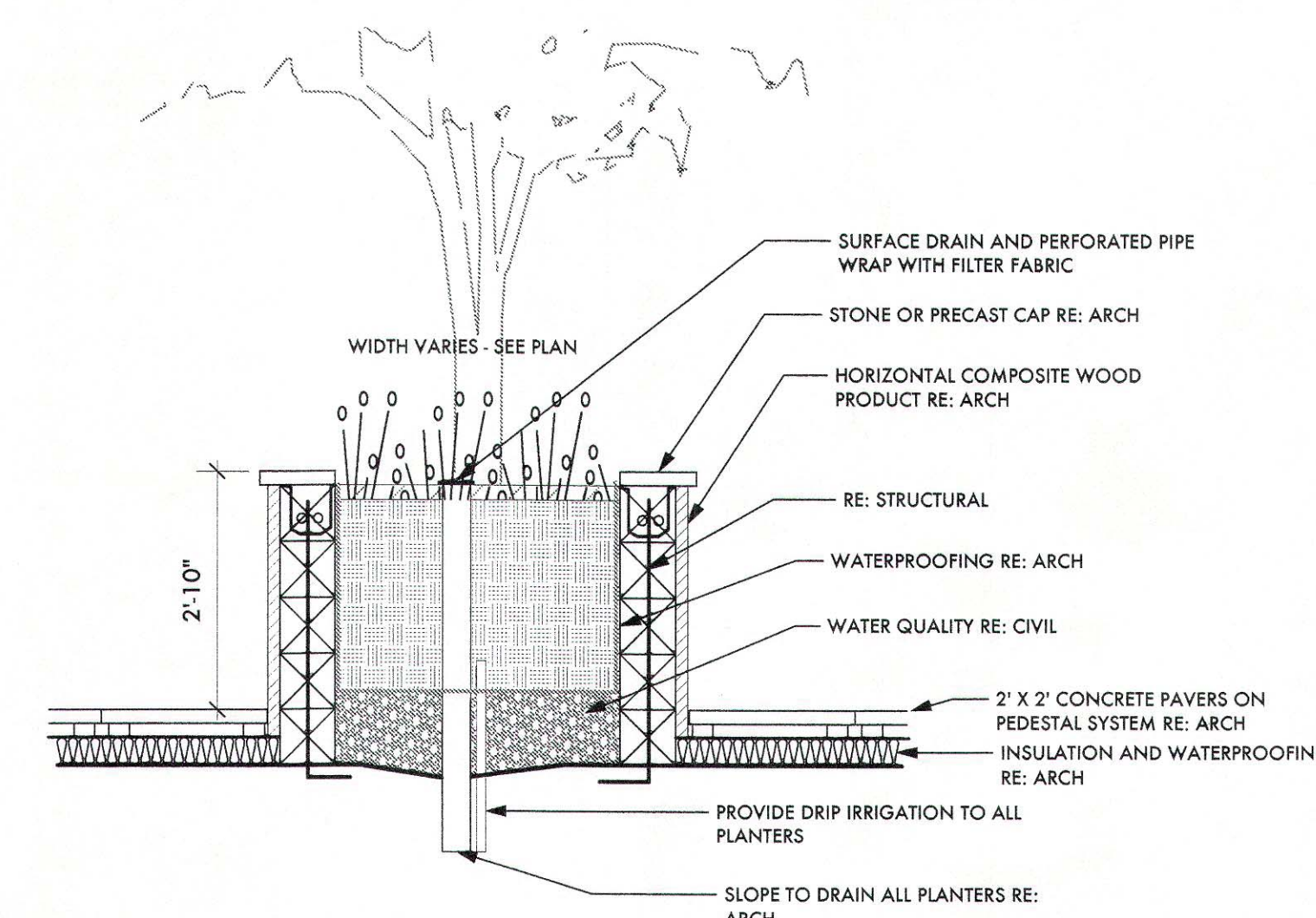
Project Name:

Issued For / Phase:
TECH DOCS

Revisions:
No. Date Remarks

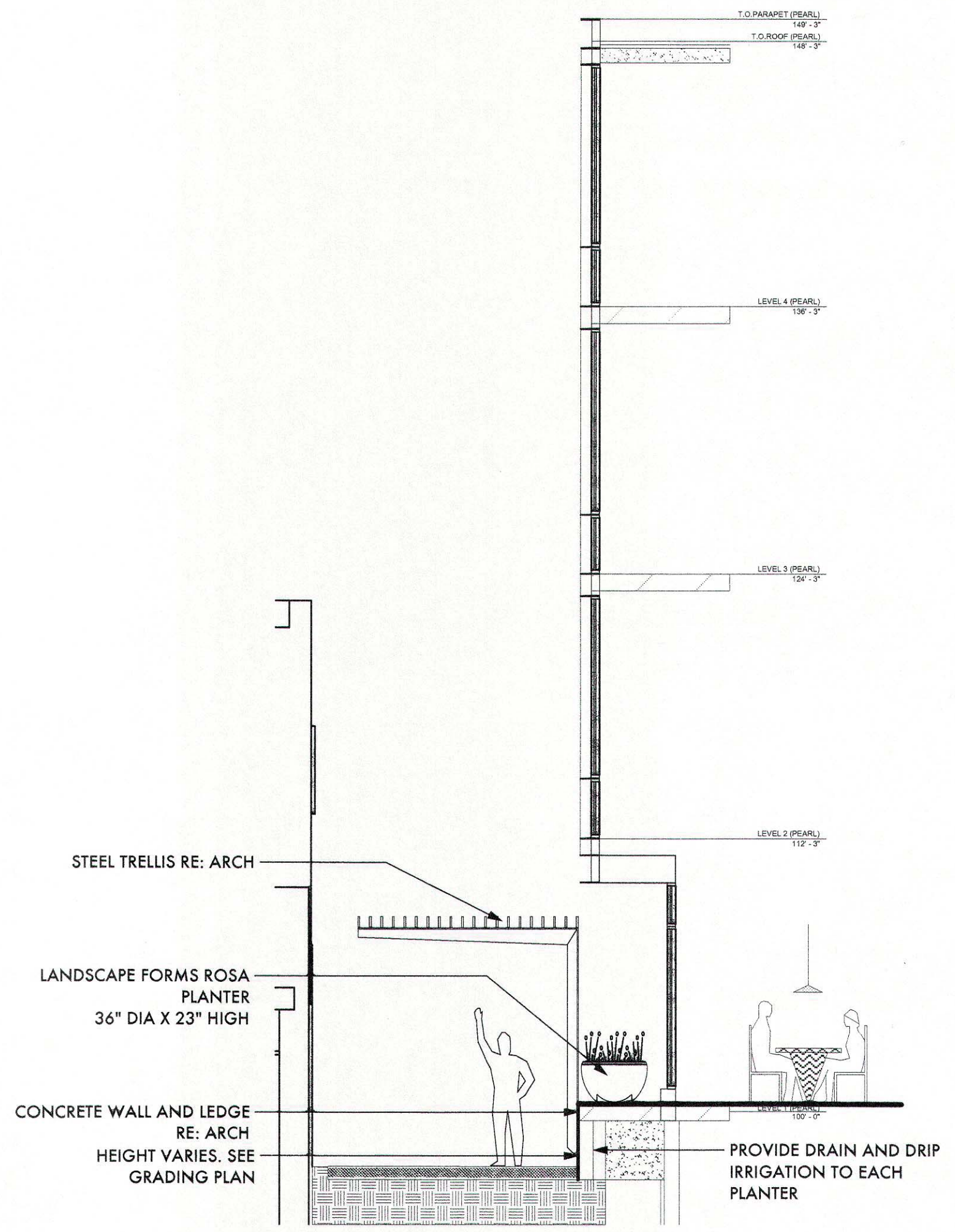
Sheet Name:
DETAILS AND ENLARGEMENTS

Sheet Number:
L3.0

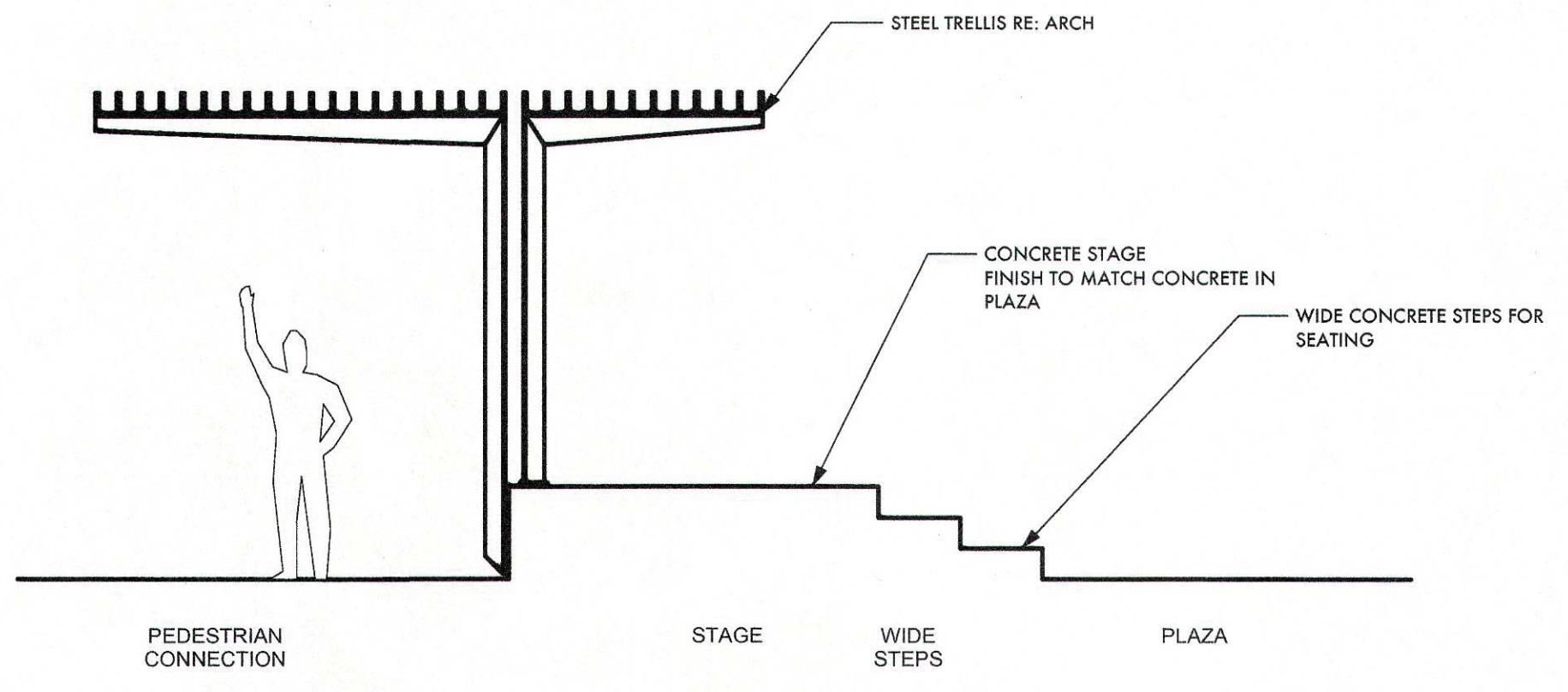


1 ROOF/DECK PLANTER
Scale: 1/2" = 1'-0"

NOTE:
REFER TO CIVIL CHEET CD 1.0 FOR WATER QUALITY PLANTER DETAILS



2 TRELLIS AT PEDESTRIAN WALKWAY
Scale: 3/16" = 1'-0"



3 SECTION THROUGH PLAZA STAGE
Scale: 1/4" = 1'-0"

Date: 01.15.2014

Project Name: _____

Issued For / Phase:
TECH DOCS

No.	Date	Remarks

Sheet Name:

DETAILS AND ENLARGEMENTS

Sheet Number:

L3.1

100% REVIEW PLANS
NOVEMBER 15, 2013

1 TRASH RECEPTACLE
SD1 / NOT TO SCALE

2 RECYCLING RECEPTACLE
SD1 / NOT TO SCALE

3 BICYCLE RACK
SD1 / NOT TO SCALE

4 STONE SEATWALL
SD1 / NOT TO SCALE

5 STONE PAVERS
SD1 / NOT TO SCALE

6 BRICK PAVERS
SD1 / NOT TO SCALE

7 PAVERS / CONCRETE TRANSITION
SD1 / NOT TO SCALE

8 CRUSHER FINES
SD1 / NOT TO SCALE

Date	Comments	Init.

Print Date: November 15, 2013	File Name: 02.ms_details.dwg	Unit Information	Unit Leader Initials

As Constructed	WEST PEARL STREETScape IMPROVEMENTS- 7TH TO 11TH STREET	Project No./Code
No Revisions:	STREETScape DETAILS	
Revised:	Designer: M/S Structure	
	Detailer: BFM/JAM/Numbers	
	Sheet Subset: SD1	Sheet Number: 50

100% REVIEW PLANS
NOVEMBER 15, 2013

1 CONCRETE PAVEMENT JOINTS
SD2 / NOT TO SCALE

2 TYPICAL PAVER CUTS
SD2 / NOT TO SCALE

3 STONE CURB AND PLANTER RAILING
SD2 / NOT TO SCALE

4 TYPICAL STREETScape SECTION-TREE GRATE
SD2 / NOT TO SCALE

5 TREE GRATE AND GUARD
SD2 / NOT TO SCALE

Date	Comments	Init.

Print Date: November 15, 2013	File Name: 02.ms_details.dwg	Unit Information	Unit Leader Initials

As Constructed	WEST PEARL STREETScape IMPROVEMENTS- 7TH TO 11TH STREET	Project No./Code
No Revisions:	STREETScape DETAILS	
Revised:	Designer: M/S Structure	
	Detailer: BFM/JAM/Numbers	
	Sheet Subset: SD1	Sheet Number: 51

THESE SHEETS ARE INCLUDED FOR REFERENCE ONLY

Date: 01.15.2014

Project Name:

Issued For / Phase:
TECH DOCS

Revisions:
No. Date Remarks

Sheet Name:
ROW PAVING
DETAILS - COB
STREETScape
PROJECT
Sheet Number:

L3.2

PLANT SCHEDULE:

PERENNIALS										
QUAN	SIZE	BOTANICAL NAME	COMMON NAME	SPREAD	HEIGHT	WATER USE	EXPOSURE	FLOWER COLOR	SEASON	
CR	16	1 GAL	CAMPESIS RADICANS	TRUMPET VINE	VINE	VINE	LOW	SUN	ORANGE	MID TO LATE SUMMER
EF	132	1 GAL	EUONYMUS FORTUNEI 'COLORATUS'	PURPLELEAF WINTERCREEPER	3-6'	12-18"	LOW	ADAPTABLE	INSIGNIFICANT	EARLY SUMMER
HH	71	1 GAL	HEDERA HELIX	ENGLISH IVY	VINE	VINE	MEDIUM	SHADE	N/A	N/A
HHR	248	1 GAL	HEMEROCALLIS 'HAPPY RETURNS'	DWARF YELLOW DAYLILY	12-18"	12-15"	LOW	SUN	YELLOW	SPRING-FALL
467										
ORNAMENTAL GRASSES/ SHRUBS										
QUAN	SIZE	BOTANICAL NAME	COMMON NAME	SPREAD	HEIGHT	WATER USE	EXPOSURE	FLOWER COLOR	SEASON	
CAK	98	1 GAL	CALAMAGROSTIS ACUTIFLORA 'KARL FOERSTER'	FEATHER REED GRASS	18-24"	4-5'	LOW	SUN TO FS	GOLDEN TAN	EARLY SUMMER TO FALL
DC	140	1 GAL	DESCHAMPSIA CESPITOSA	TUFTED HAIR GRASS	18-24"	2-3'	MEDIUM	SUN TO SHADE	SHINEY BLACK	MID-SUMMER
MSP	130	1 GAL	MISCANTHUS SINENSIS PURPURASCENS	FLAME (PURPLE MAIDEN) GRASS	2-3'	3-4'	MEDIUM	SUN	BRONZE TO SILVERY WHITE	LATE SUMMER
MSV	55	1 GAL	MISCANTHUS SINENSIS 'VARIEGATUS'	VARIEGATED MAIDEN GRASS	2-3'	4-5'	MEDIUM	SUN TO SHADE	SILVERY TO BUFF	LATE SUMMER TO EARLY FALL
PY	246	1 GAL	PANICUM VIRGATUM 'HEAVY METAL'	HEAVY METAL BLUE SWITCH GRASS	12-18"	3-4'	LOW	SUN	PINK	FALL
RAG	12	5 GAL	RHUS AROMATICA GRO-LOW	SUMAC, DWARF FRAGRANT	6-8'	2-3'	LOW	SUN	YELLOW	EARLY SPRING
687										
DECIDUOUS TREES										
QUAN	SIZE	BOTANICAL NAME	COMMON NAME	SPREAD	HEIGHT	WATER USE	EXPOSURE	FLOWER COLOR	SEASON	
CO	5	2.5 CAL	CELTIS OCCIDENTALIS	HACKBERRY, WESTERN	40-50'	50-60'	LOW	SUN	N/A	N/A
CCIC	11	2.0 CAL	CRATAEGUS CRUS-GALLI INERMIS CRUSADER	HAWTHORN, THORNLESS COCKSPUR	12-15'	12-15'	LOW	SUN	WHITE	SPRING
CCI	4	2.0 CAL	CRATAEGUS CRUS-GALLI INERMIS	HAWTHORN, THORNLESS COCKSPUR	15-20'	15-20'	LOW	SUN	WHITE	SPRING
MSS	4	2.0 CAL	MALUS SPRING SNOW	CRABAPPLE, SPRING SNOW	20-25'	20-25'	MEDIUM	SUN	WHITE	SPRING
PAB	3	2.5 CAL	PLATANUS X ACERIFOLIA BLOODGOOD	PLANETREE, BLOODGOOD	65-80'	70-100'	MEDIUM	SUN	N/A	N/A
QA	1	SEE NOTE	QUERCUS ALBA	OAK, WHITE	50-60'	50-60'	LOW	FS TO SHADE	N/A	N/A
28										

NOTE: ALL TREES TO BE SPECIMAN QUALITY.

QUERCUS ALBA TO BE LARGEST CALIPER AVAILABLE IN THE TRADE AT THE TIME OF PLANTING

LANDSCAPE COMPLIANCE STATEMENT (FROM APPROVED SITE REVIEW DOCUMENTS)

9-9-12(d) (8) "Minimum Overall Site Landscaping: In all zones except A, P, RR, RE, RL and RM, one tree and five shrubs are planted for each one thousand five hundred square feet of lot area not covered by a building or required parking"

THIS PROJECT HAS A 3,500 SF PLAZA WHICH WOULD REQUIRE 3 TREES AND 15 SHRUBS. WE ARE REQUESTING A MODIFICATION TO THE STANDARD TO BEST FIT THE PROJECT - AN URBAN PLAZA WITH ENHANCED (IN EXCESS OF CODE REQUIREMENTS) STREETSAPES (THREE STREET FRONTAGES), HIGH QUALITY HARDSCAPE MATERIALS, PROTECTION OF TWO LARGE EXISTING TREES ADJACENT TO AND INTEGRATED WITH THE PLAZA, OPEN PLANTING AREAS WITH GROUNDCOVERS, EXTENSIVE ROOF DECK AREAS INCLUDING PLANTINGS, AND ENHANCED NORTH SOUTH PEDESTRIAN CONNECTION (WITH ADDITIONAL PLANT MATERIALS BEYOND MINIMUM REQUIREMENTS).

BOULDER, CO

Date: 01.15.2014

Project Name:

Issued For / Phase:
TECH DOCS

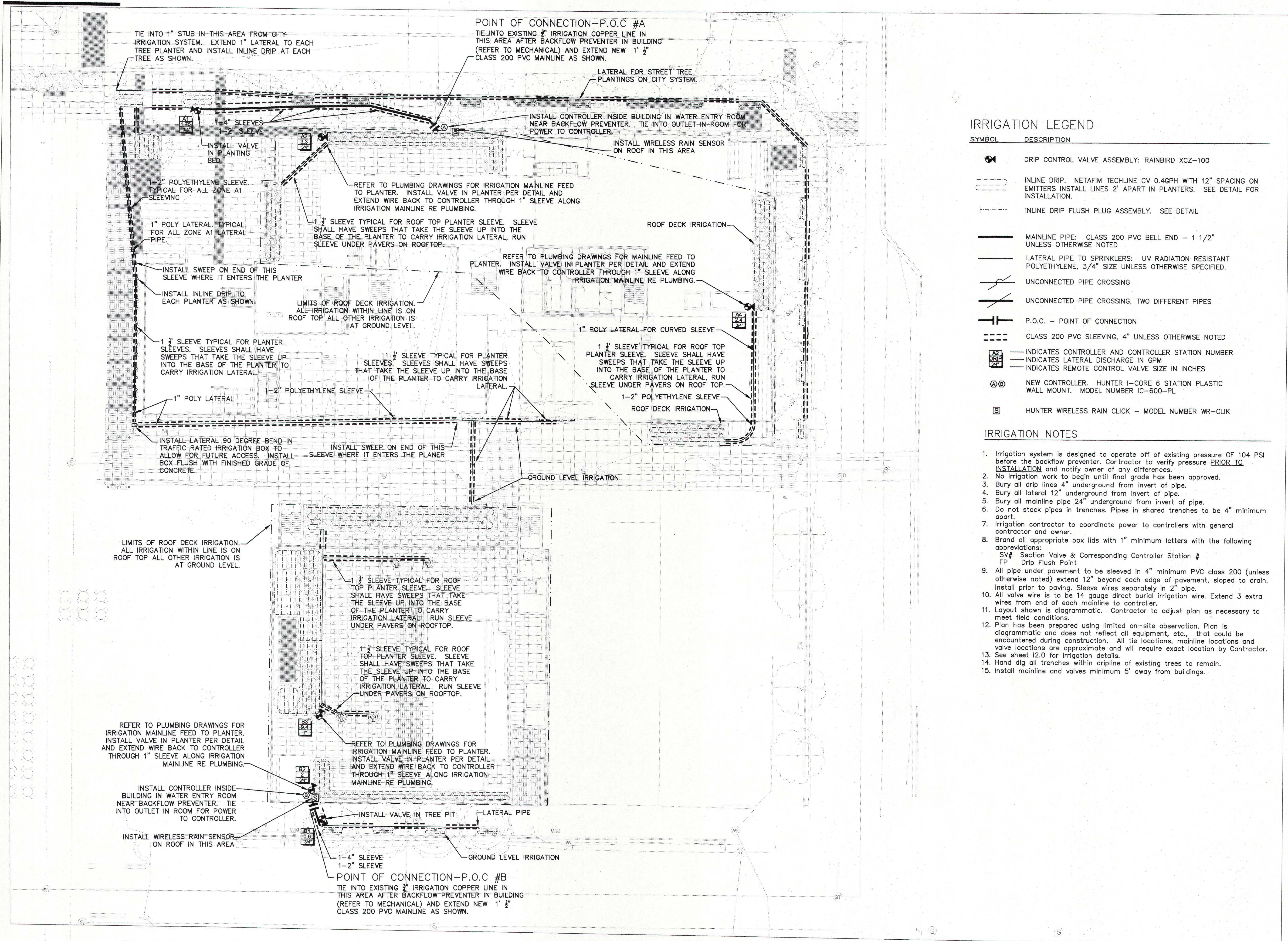
Revisions:
No. Date Remarks

Sheet Name:

PLANT SCHEDULE
AND COMPLIANCE

Sheet Number:

L4.0



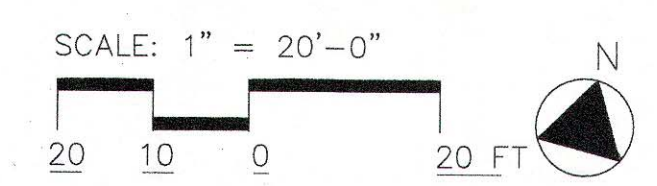
IRRIGATION LEGEND

SYMBOL	DESCRIPTION
	DRIP CONTROL VALVE ASSEMBLY: RAINBIRD XCZ-100
	INLINE DRIP: NETAFIM TECHLINE CV 0.40PH WITH 12" SPACING ON EMITTERS. INSTALL LINES 2' APART IN PLANTERS. SEE DETAIL FOR INSTALLATION.
	INLINE DRIP FLUSH PLUG ASSEMBLY. SEE DETAIL
	MAINLINE PIPE: CLASS 200 PVC BELL END - 1 1/2" UNLESS OTHERWISE NOTED
	LATERAL PIPE TO SPRINKLERS: UV RADIATION RESISTANT POLYETHYLENE, 3/4" SIZE UNLESS OTHERWISE SPECIFIED.
	UNCONNECTED PIPE CROSSING
	UNCONNECTED PIPE CROSSING, TWO DIFFERENT PIPES
	P.O.C. - POINT OF CONNECTION
	CLASS 200 PVC SLEEVING, 4" UNLESS OTHERWISE NOTED
	INDICATES CONTROLLER AND CONTROLLER STATION NUMBER
	INDICATES LATERAL DISCHARGE IN GPM
	INDICATES REMOTE CONTROL VALVE SIZE IN INCHES
	NEW CONTROLLER. HUNTER I-CORE 6 STATION PLASTIC WALL MOUNT. MODEL NUMBER IC-600-PL
	HUNTER WIRELESS RAIN CLICK - MODEL NUMBER WR-CLIK

IRRIGATION NOTES

- Irrigation system is designed to operate off of existing pressure OF 104 PSI before the backflow preventer. Contractor to verify pressure PRIOR TO INSTALLATION and notify owner of any differences.
- No irrigation work to begin until final grade has been approved.
- Bury all drip lines 4" underground from invert of pipe.
- Bury all lateral 12" underground from invert of pipe.
- Bury all mainline pipe 24" underground from invert of pipe.
- Do not stock pipes in trenches. Pipes in shared trenches to be 4" minimum apart.
- Irrigation contractor to coordinate power to controllers with general contractor and owner.
- Brand all appropriate box lids with 1" minimum letters with the following abbreviations:
SV# Section Valve & Corresponding Controller Station #
FP Drip Flush Point
- All pipe under pavement to be sleeved in 4" minimum PVC class 200 (unless otherwise noted) extend 12" beyond each edge of pavement, sloped to drain. Install prior to paving. Sleeve wires separately in 2" pipe.
- All valve wire is to be 14 gauge direct burial irrigation wire. Extend 3 extra wires from end of each mainline to controller.
- Layout shown is diagrammatic. Contractor to adjust plan as necessary to meet field conditions.
- Plan has been prepared using limited on-site observation. Plan is diagrammatic and does not reflect all equipment, etc., that could be encountered during construction. All tie locations, mainline locations and valve locations are approximate and will require exact location by Contractor.
- See sheet 12.0 for Irrigation details.
- Hand dig all trenches within dripline of existing trees to remain.
- Install mainline and valves minimum 5' away from buildings.

1 Irrigation Plan
Scale: 1"=20'



Date: 01.28.2014

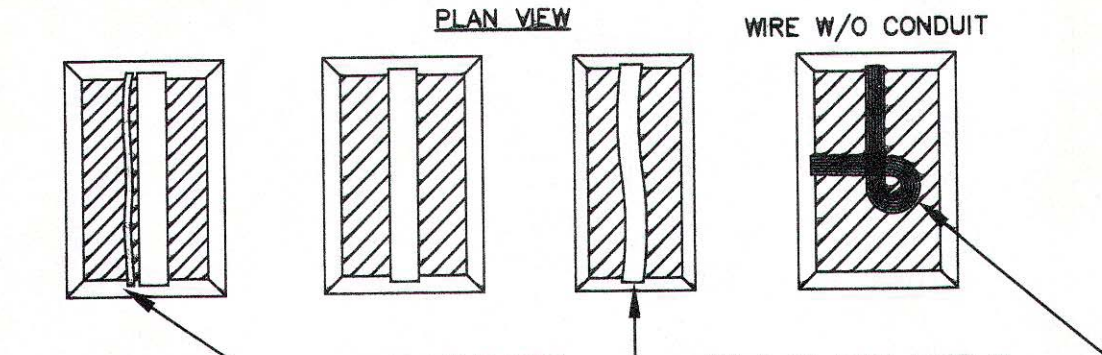
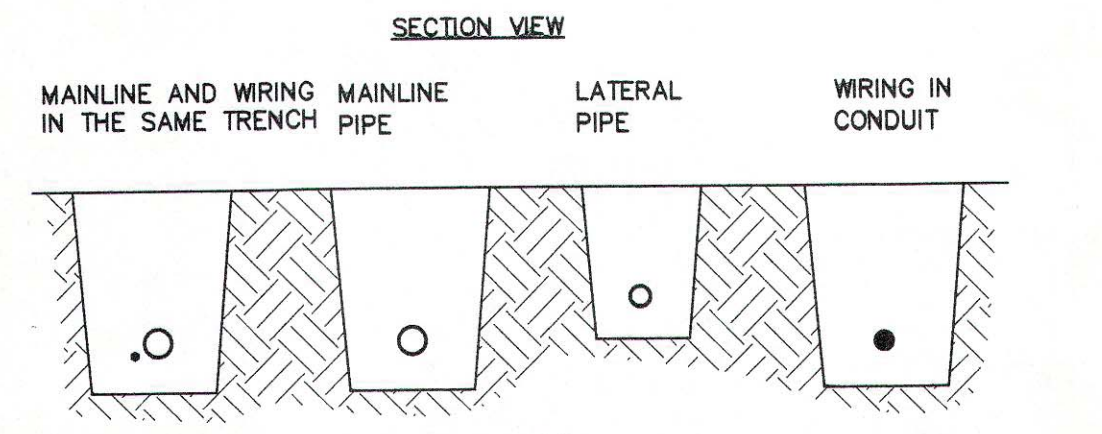
Project Name:

Issued For / Phase:
TECH DOCS

Revisions:
No. Date Remarks

Sheet Name:
IRRIGATION PLAN

Sheet Number:
11.0

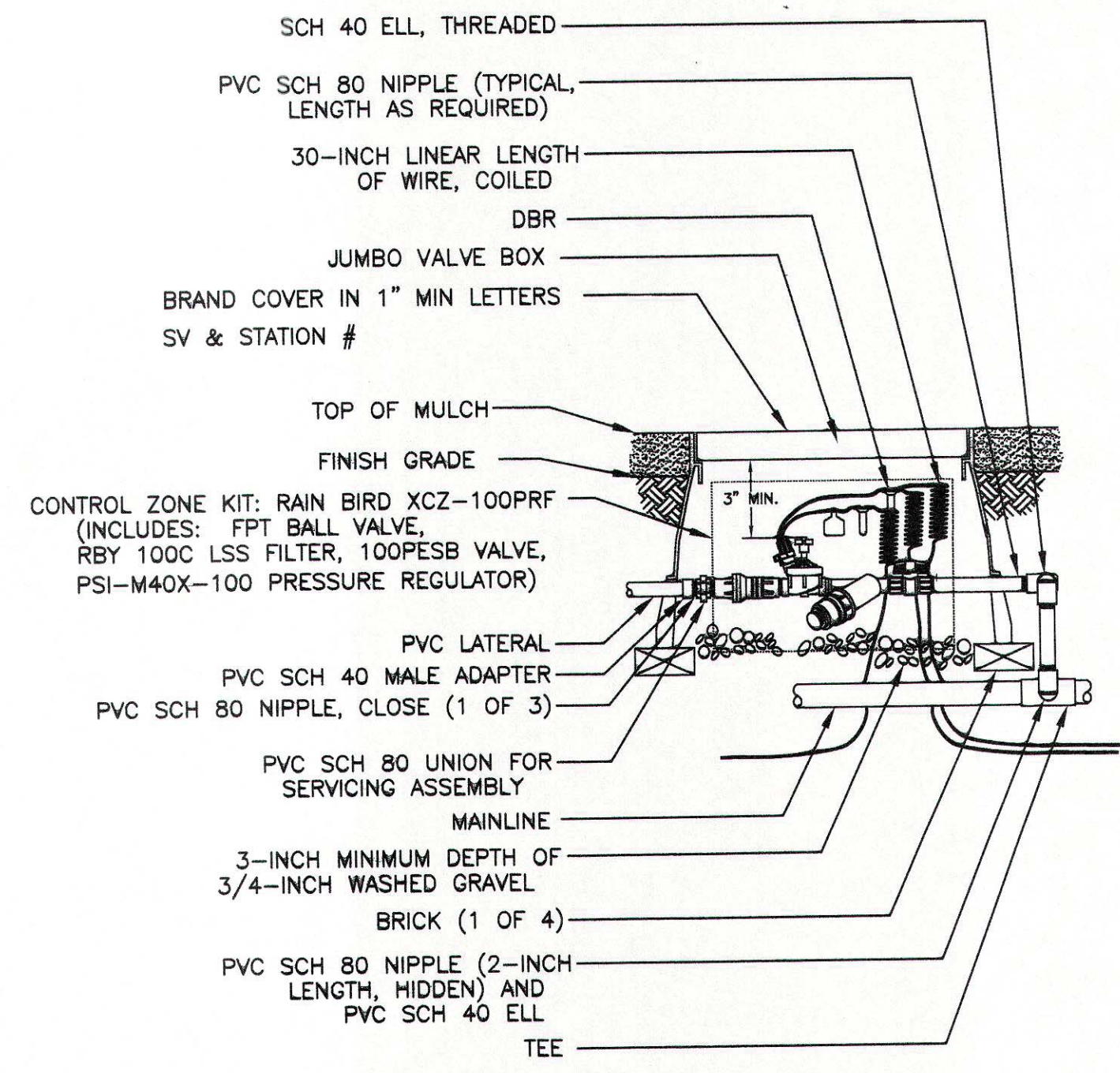


RUN WIRING BENEATH AND BESIDE MAINLINE. TAPE AND BUNDLE AT 10-FOOT INTERVALS.
 ALL SOLVENT WELD PLASTIC PIPING TO BE SNAKED IN TRENCH AS SHOWN.
 TIE A 24-INCH LOOP IN ALL WIRING AT CHANGES OF DIRECTION OF 30° OR GREATER. UNTIE AFTER ALL CONNECTIONS HAVE BEEN MADE.

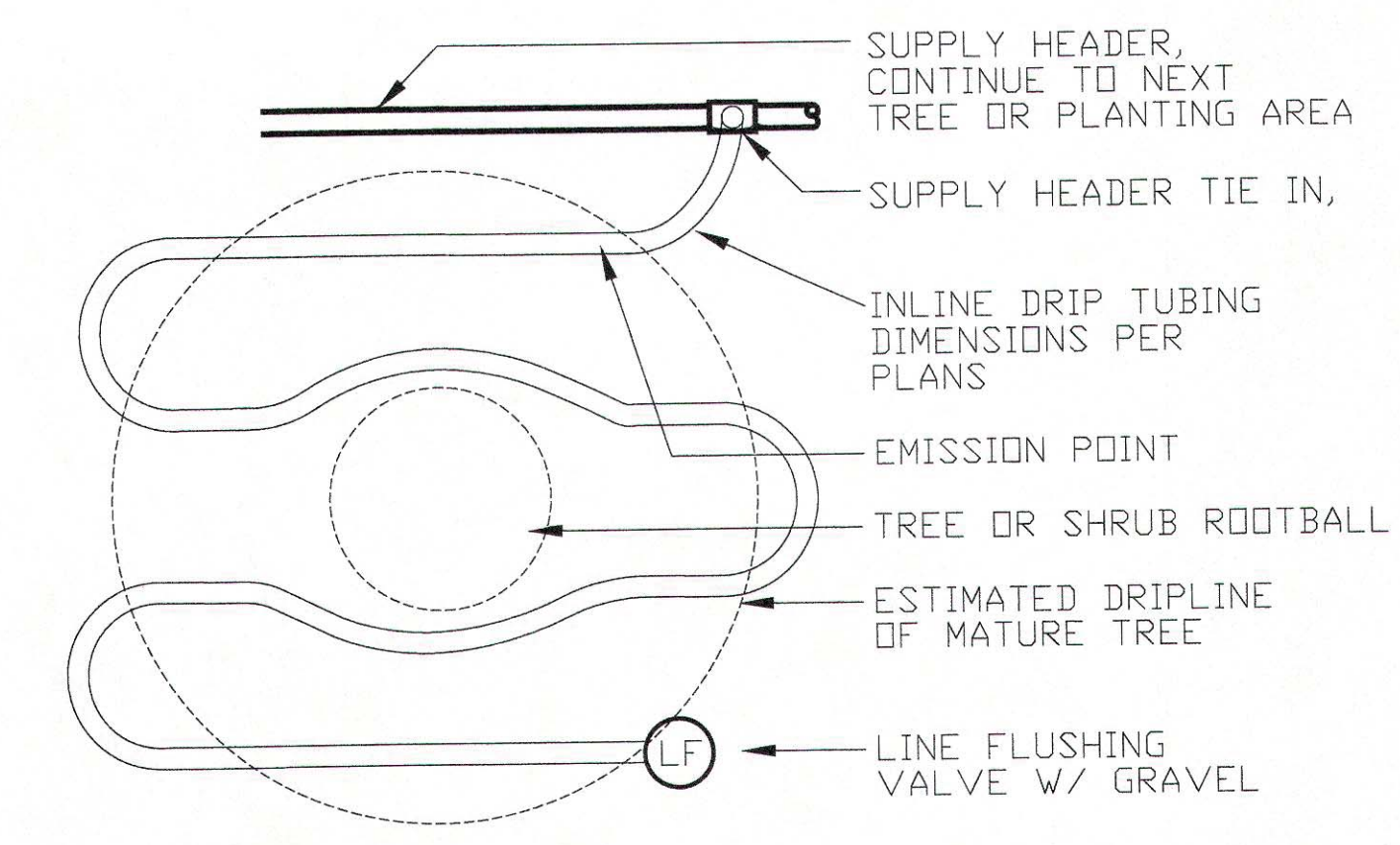
NOTES:

1. SLEEVE BELOW ALL HARDSCAPE ELEMENTS WITH CLASS 200 PVC TWICE THE DIAMETER OF THE PIPE OR WIRE BUNDLE WITHIN.
2. FOR PIPE AND WIRE BURIAL DEPTHS SEE SPECIFICATIONS.

1 PIPE AND WIRE TRENCHING
NOT TO SCALE

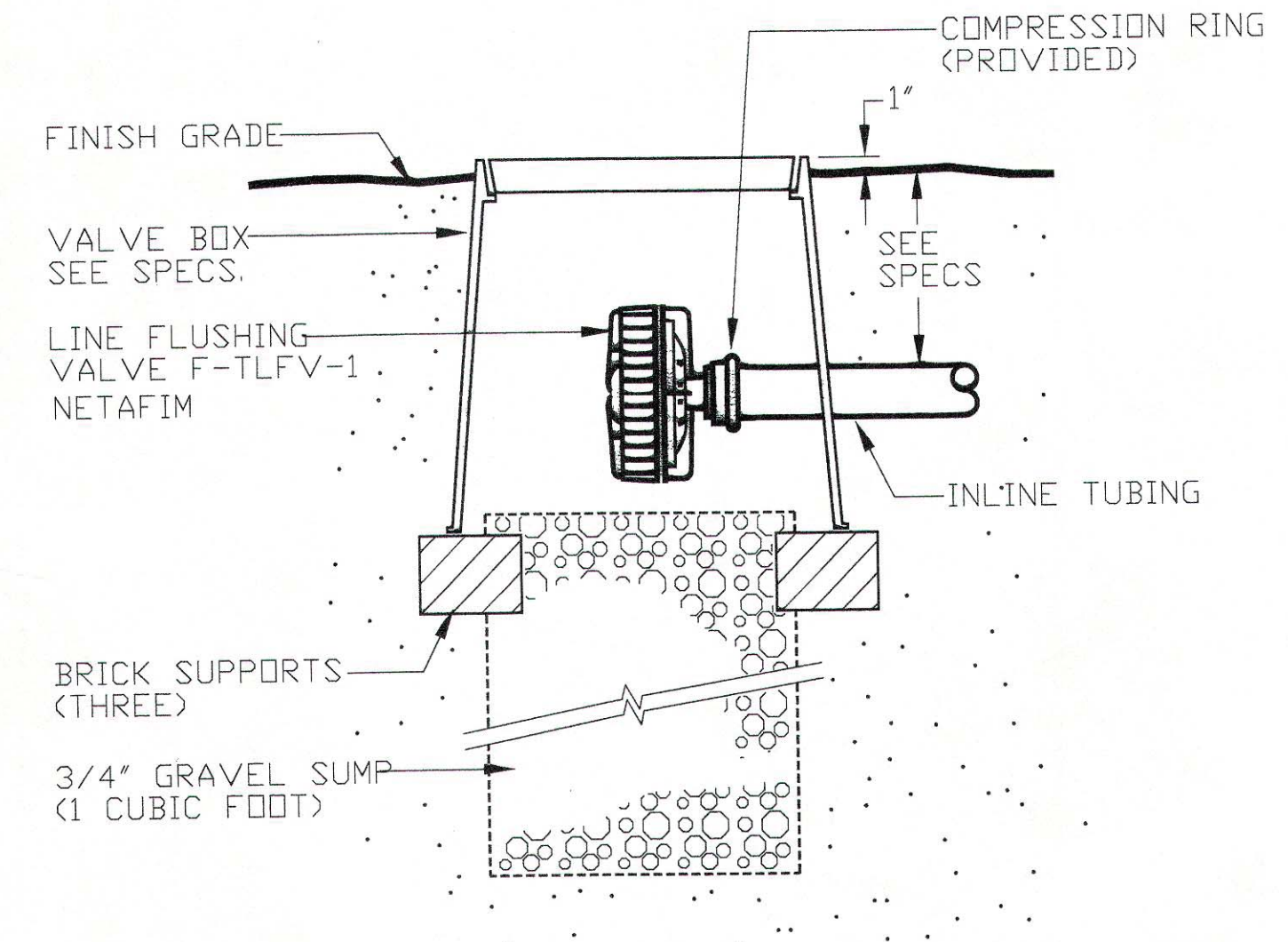


2 DRIP CONTROL VALVE
NOT TO SCALE



NOTE ON SPACING OF DRIPLINE. INSTALL DRIP LINE 2' APART IN ALL PLANTING AREAS.

3 INLINE DRIP AT PLANTING AREAS AND TREE VOIDS
NOT TO SCALE



4 FLUSH VALVE FOR INLINE DRIP
NOT TO SCALE

BOULDER, CO

Date: 01.28.2014
Project Name:

Issued For / Phase:
TECH DOCS

Revisions:

No.	Date	Remarks
-----	------	---------

Sheet Name:
IRRIGATION DETAILS
Sheet Number:
12.0