

Department of Housing & Human Services (HHS)

City of Boulder

Overview

December 11, 2003

HHS Mission

The Department is dedicated to meeting the housing and human service needs of Boulder residents by providing and supporting services that result in a healthy community.

Climate in the Early 1970s

- ❑ Federal social programs were being reduced or eliminated
- ❑ The community recognized the connection between human services and overall quality of life
- ❑ The City assessed the needs of the community and how best to fill the gaps

Creation of the HHS Department

- The Department was created by City Council in 1973 to:
 - Evaluate and address “social problems and conditions” for all ages and socioeconomic conditions
 - Coordinate planning and services with federal, state, local and private entities

Today: History Repeats Itself

- ❑ Cuts in federal and state funding for Boulder and other local governments
- ❑ Boulder also experiences significant drop in locally generated revenue

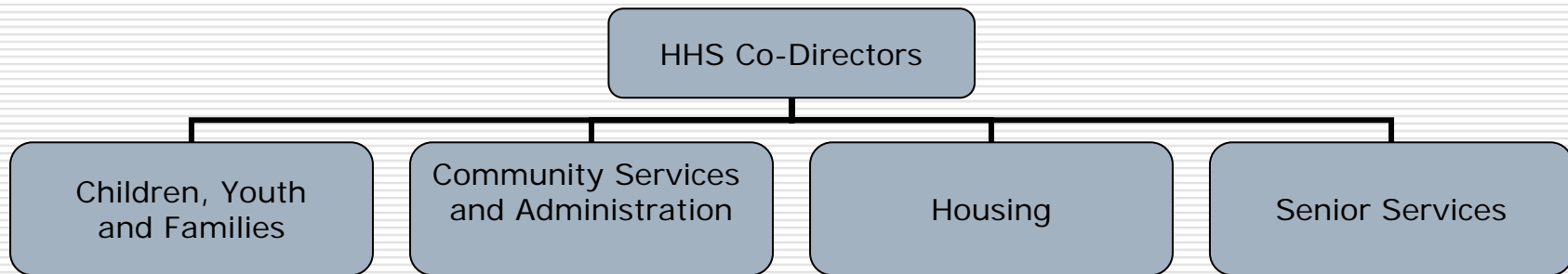
HHS Goals

- Identify community needs and respond to changing trends
- Build community capacity to provide services
- Strengthen community partnership and collaborations
- Ensure that necessary safety net services are provided

Department Strategies

- ❑ Serve as a **Catalyst** in promoting coordination among human service providers and government entities
- ❑ Provide **Funding** for housing and human service programs through contracts with non-profits and other agencies
- ❑ Initiate **Direct Services** to meet social needs of the community

HHS Is Organized Into Four Divisions



Division of Community Services and Administration (CSA)

Mission

CSA is committed to encouraging, supporting and advancing efforts that fulfill human needs and protect civil rights of the Boulder community.

CSA Serves As A **Catalyst** and Partner

- Human Relations Commission Forums and Issues
- Promotes interagency collaboration through targeted human services funding

CSA Provides **Funding** to the Community

- ❑ Supports human services safety net and promotion of prevention and early intervention
- ❑ Supports human relations projects and diversity education
- ❑ Supports cultural celebrations

CSA Provides **Direct Services**

- CSA's Office of Human Rights enforces Boulder's human rights ordinance (anti-discrimination)

Division of Children, Youth and Families (CYF)

Mission

Through coordinated collaboration and planning, CYF Division is dedicated to creating a healthy community by delivering high quality services, community education, and advocacy which helps children, youth and families develop the long term capacity to be healthy, self reliant, and successful.

CYF Serves As A **Catalyst** and Partner

- ❑ Coordinates the efforts of the Early Care and Education Council of Boulder County (ECECBC)
- ❑ Provides technical assistance to local agencies, convenes community-wide forums and coordinates partnerships

CYF Provides **Funding** to the Community

- ❑ Subsidizes low-income parents for child care
- ❑ Provides funding for educational, cultural, and recreational opportunities for youth

CYF Initiates **Direct Services**

- ❑ In-school services to reduce non-academic barriers to success
- ❑ Training and technical assistance to increase the quantity and quality of child care providers
- ❑ Child care referrals, consultation and education
- ❑ Community and family mediation services

Division of Senior Services (BSS—Boulder Senior Services)

Mission

The Division of Senior Services acts as a catalyst and provides opportunities designed to support the physical, intellectual, social and emotional well-being of older adults and their families.

BSS Serves As A **Catalyst** and Partner

- ❑ Fosters business discounts for seniors through Gold Rush program
- ❑ Coordinates Boulder Interagency Network for Aging Services
- ❑ Collaborates with service providers, businesses and community groups
- ❑ Works with Boulder Seniors Foundation

BSS Provides **Funding** to the Community

- Supports Meals on Wheels, providing on-site and home-delivered meals

BSS Initiates **Direct Services**

- ❑ Operates two senior centers as focal points for senior services and activities
- ❑ Provides consultation and resource referral to elders and caregivers
- ❑ Reduces isolation and stimulates well-being through classes, trips, wellness programs, seminars

Division of Housing (DOH)

Mission

The Division of Housing's mission is to preserve and provide housing opportunities that promote an economically diverse and environmentally sustainable community.

DOH Serves As A **Catalyst** and Partner

- ❑ Policy development to achieve City Council's affordable housing goals
- ❑ Participates in city-wide and regional planning (County Consortium, CU, Boulder Valley Comp Plan)
- ❑ Secures housing affordability through inclusionary zoning

DOH Provides **Funding** to the Community

- ❑ To build, acquire, and rehab affordable housing
- ❑ For acquisition, construction, repair and maintenance of non-profit facilities
- ❑ Housing fee waivers and subsidies for planning and development
- ❑ Operating subsidies for community services

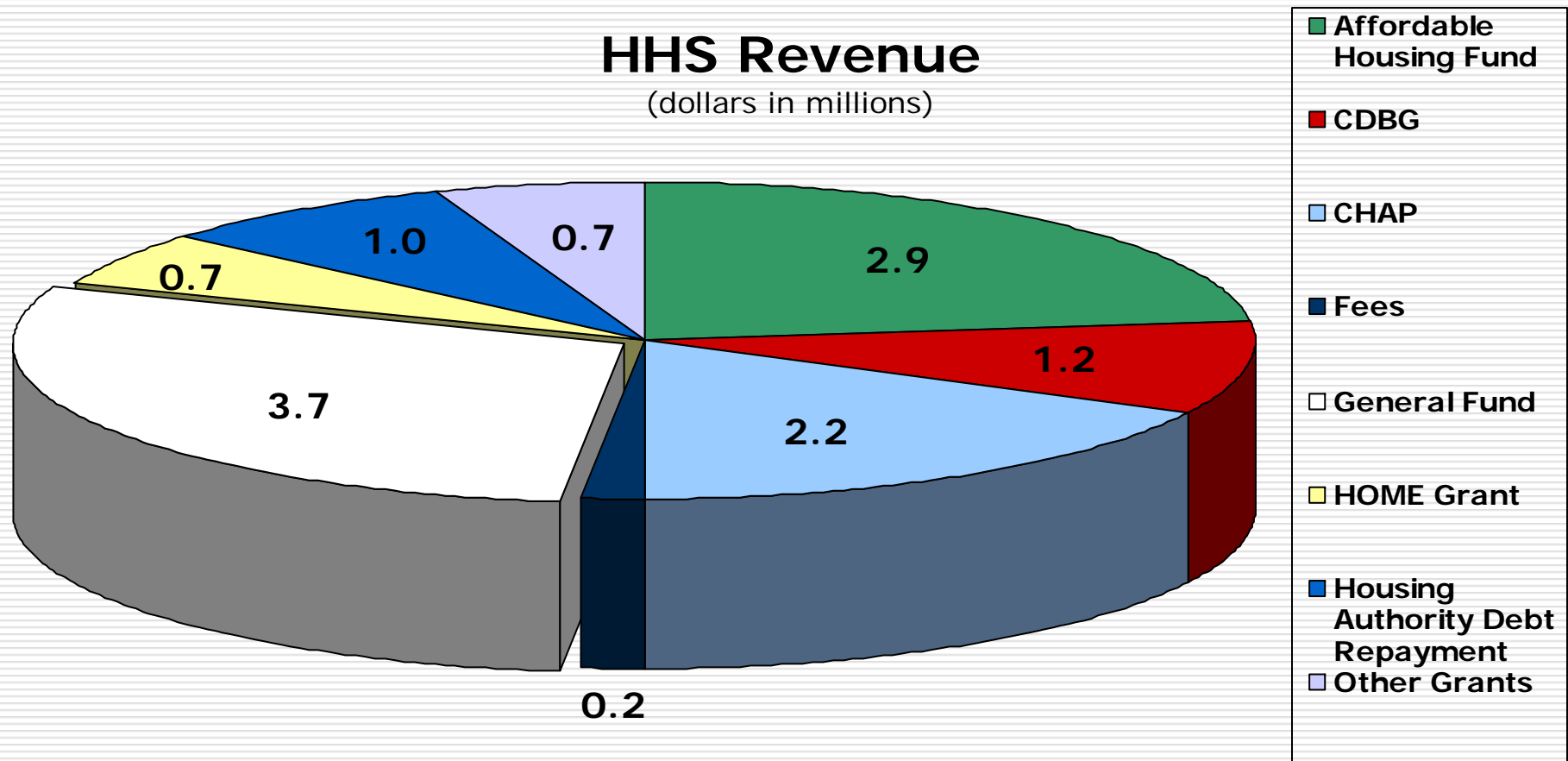
DOH Initiates **Direct Services**

- ❑ Orientations and homeownership classes
- ❑ Low-income home rehabilitation
- ❑ Qualifies residents for affordable housing opportunities
- ❑ Coordinates Ice Busters program for elderly and disabled individuals

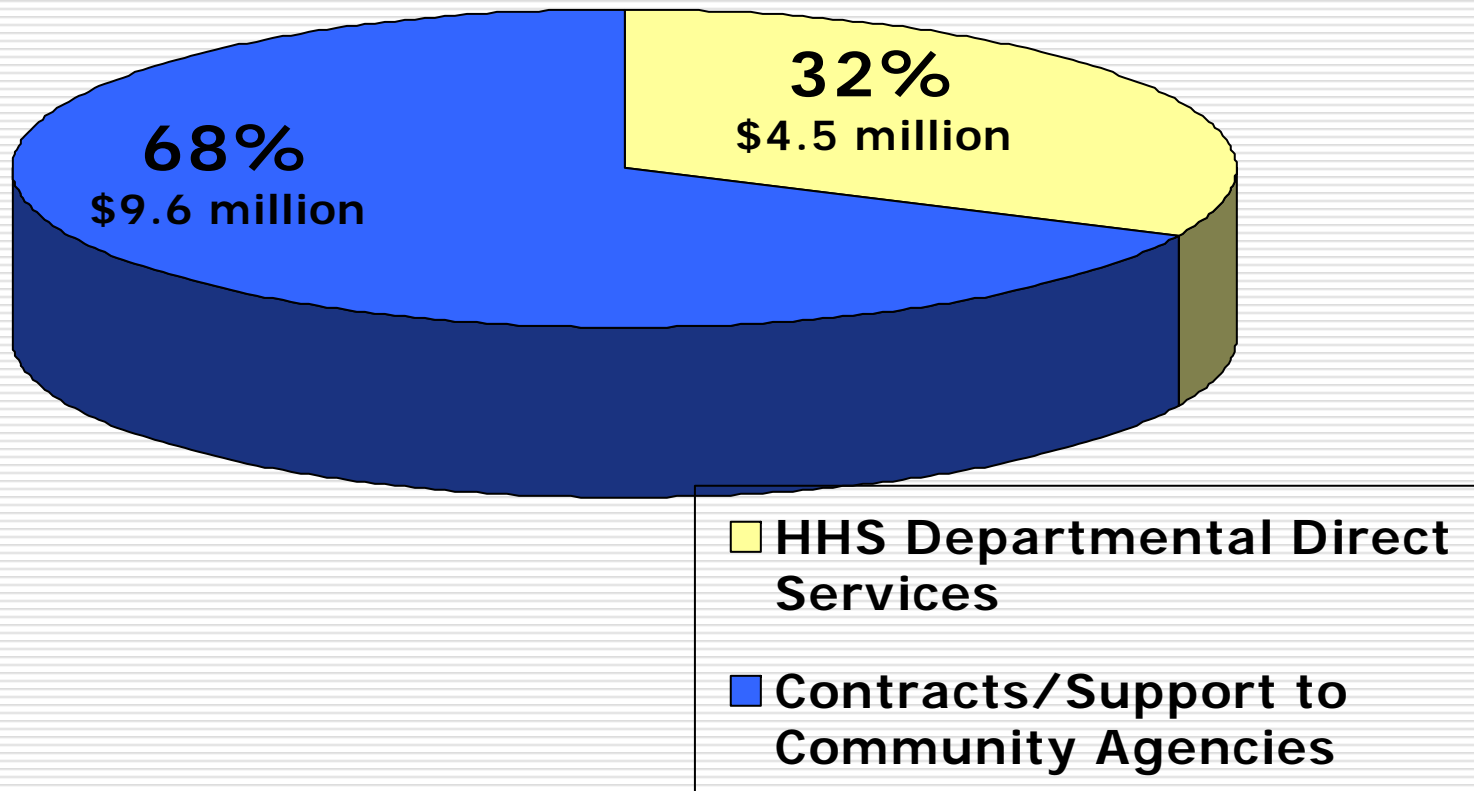
HHS Revenue

One-third of HHS Revenue Comes From the City's General Fund

2003 Budget: \$14,062,238



2003 HHS Budget Uses of Funds



HHS Boards and Committees

- Community Mediation Services Steering Committee
- Children's Services Advisory Committee
- Community Development Committee
- Homeownership Committee
- HHS Master Plan Advisory Committee
- Housing Technical Review Group
- Human Relations Commission
- Human Services Fund Technical Review Committee
- Senior Community Advisory Committee
- Youth Opportunities Advisory Board
- Boulder Seniors Foundation

Key Factors for Consideration

- ❑ When the economy falters, demand for human services grows while resources diminish
- ❑ The unemployment rate in the Boulder-Longmont area roughly doubled in 2001
- ❑ Five-year limit on TANF participation expired in 2002 for many people
- ❑ Boulder's demographics are changing

HEALTHY COMMUNITY

Empowered, Self-Reliant People

