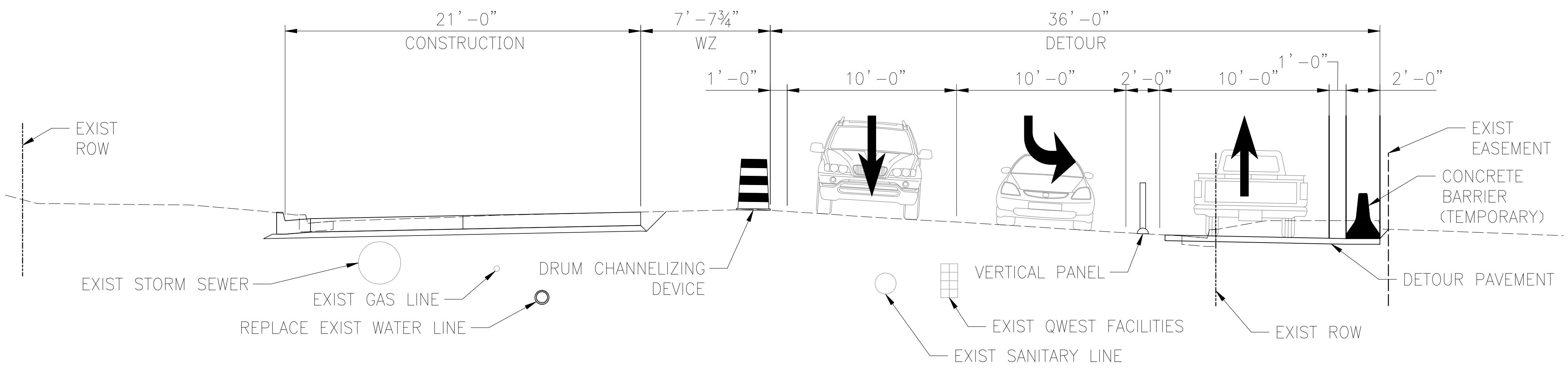
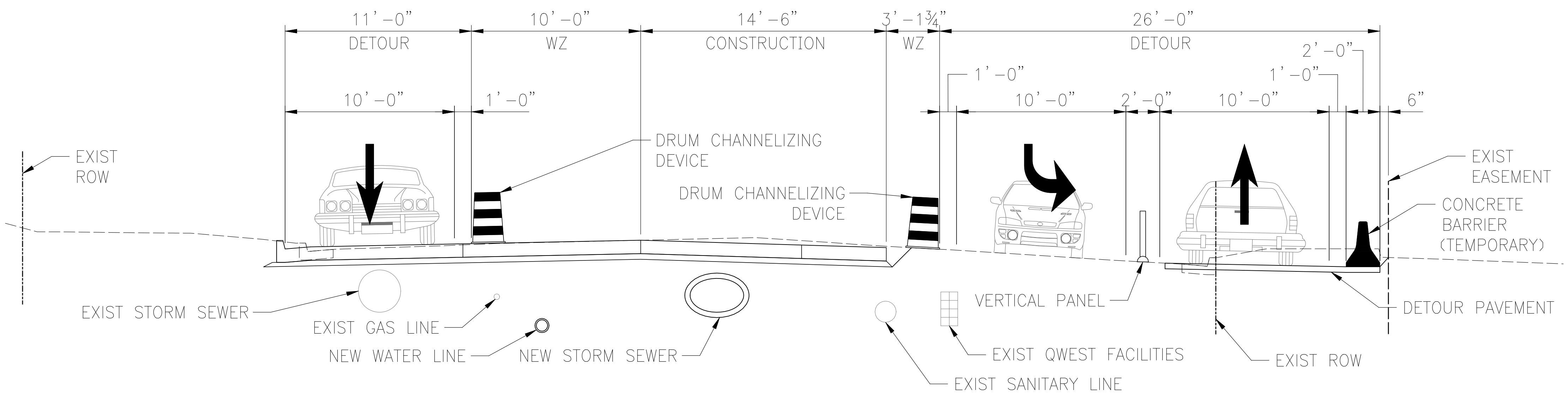


# BROADWAY - PINE TO IRIS



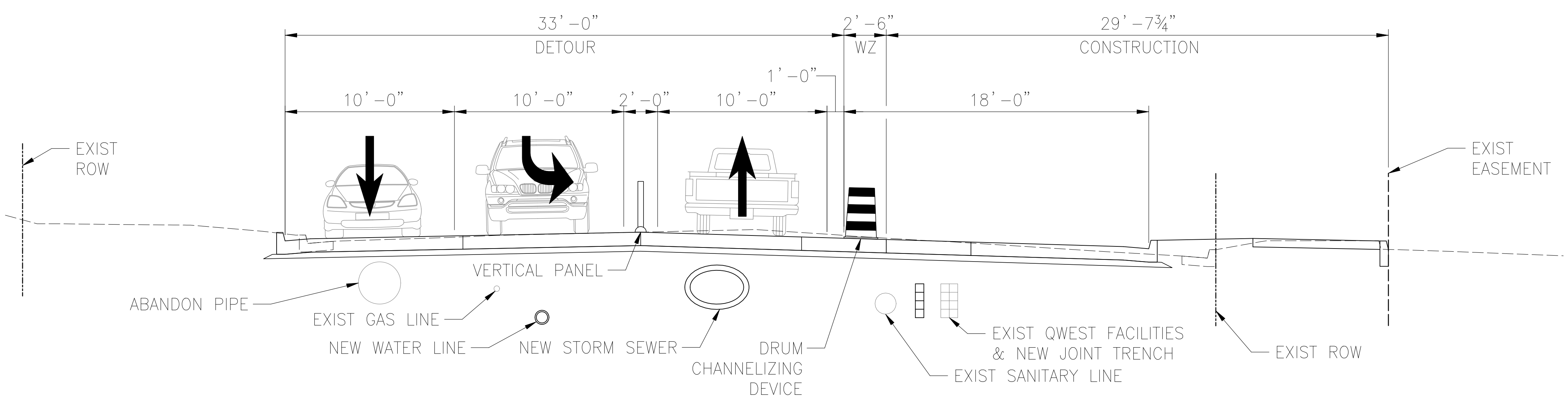
## TYPICAL FIVE LANE DETOUR SECTION MAINTAINING LEFT TURN - PHASE 1

SHIFT ONE LANE OF TRAFFIC IN EACH DIRECTION TO THE EAST SIDE OF BROADWAY  
INSTALL UTILITIES ALONG THE WEST SIDE OF BROADWAY FOLLOWED BY 21' OF CONCRETE PAVEMENT



## TYPICAL FIVE LANE DETOUR SECTION MAINTAINING LEFT TURN - PHASE 2

SHIFT SOUTHBOUND TRAFFIC TO THE WEST SIDE OF BROADWAY  
INSTALL UTILITIES DOWN THE CENTER OF BROADWAY FOLLOWED BY 14.5' OF CONCRETE PAVEMENT



## TYPICAL FIVE LANE DETOUR SECTION MAINTAINING LEFT TURN - PHASE 3

SHIFT NORTHBOUND TRAFFIC TO THE WEST SIDE OF BROADWAY  
INSTALL UTILITIES ALONG THE EAST SIDE OF BROADWAY FOLLOWED BY 15.5' OF CONCRETE PAVEMENT AND SIDEWALK

