



PACE
PARTNERS FOR A
CLEAN ENVIRONMENT

Waste Haulers for *Dental Offices*

Local & Nationwide Dental Waste Recyclers

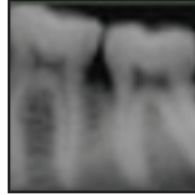
Spring 2009

Local Waste Recyclers	Amalgam Contact & Non-Contact	Silver			Lead		Comments
		Fixer	Silver Recovery	Scrap Film	Lead Foils	X-ray Apron	
Enviro-Solve Denver (303) 297-3586	Y						
Merry X-Ray Chemical Denver (303) 698-1701		Y	Y	Y			Must buy chemicals to use silver recovery & film recycling program.
Rocky Mountain Radiographics Parker (303) 841-3561 www.rkymtnrad.com			Y	Y			Sells and services recovery systems of various sizes. Will pick up scrap film at no charge.
Safety-Kleen (303) 761-8614 www.safety-kleen.com	Y	Y	Y	Y	Y	Y	Dental office receives credit for "high silver" solutions.
S & H Silver Recovery Denver (303) 618-9914		Y	Y	Y	Y		
Nelson Refining, Denver (303) 302-5440			Y	Y	Y	Y	Pick up service, sells silver recovery cartridges.
Western Aluminum Recycling 3280 Valmont, Unit C Boulder (303) 447-0252					Y	Y	Will pay \$0.10/lb. for lead dropped off at facility.
National Waste Recyclers	Amalgam	Fixer	Silver Recovery	Scrap Film	Lead Foils	X-ray Apron	Comments
AERC Recycling Solutions (866) 447-5177 www.recyclekit.com/	Y						Prepaid mail-in 1-gal pail; accepts extracted teeth.
Amalgaway, Inc. (800) 267-1467 www.amalgaway.com	Y				Y		Prepaid mail-in pail; accepts all types.
Bethlehem Apparatus (610) 838-7034 www.bethlehemapparatus.com/	Y						Direct recycler, prepaid mail-in container; accepts teeth w/ amalgam.
DRNA, Inc. (800) 360-1001 www.drna.com/	Y				Y		Mail-in, accepts all types of amalgam.
Enviro Medical Waste, Inc. (866) 669-9201 www.enviromedicalwaste.com/	Y				Y		Prepaid mail-in 1, 2.5-gal pail, accepts traps, capsules, and sludge.
Heritage Environmental (877) 436-8778 www.heritage-enviro.com	Y						Direct recycler, mail-in kit; accepts amalgam sludge & teeth w/ amalgam.
Maguire-Strickland Refining (800) 486-2858 www.maguireref.com	Y				Y		Prepaid mail-in service; accepts all types of amalgam waste.
Mercury Waste Solutions (800) 741-3343 www.mwsi.com/	Y	Y			Y		Direct recycler, prepaid mail-in service; accepts all types of amalgam.
Stericycle (800) 355-8773 www.stericycle.com/	Y						Prepaid mail-in 1, 2, 5-gal pail; accepts capsules and extracted teeth.
Waste & Compliance Management 866-436-9264 www.wcminc.net/index.html	Y				Y		Prepaid mail-in pail.

X-Ray Waste Management

Recycling silver waste

Wastewater treatment plants cannot extract silver from used fixer solution that is poured down the drain. Silver from fixer kills beneficial bacteria in the process at the wastewater treatment plant and ends up in creeks or in biosolids applied to farmland. Silver is a toxic heavy metal and a valuable resource that should be conserved. Silver from used film and fixer may be classified as hazardous wastes, depending on the concentration of silver. Several services are readily available for proper management of fixer waste. One common practice is to save fixer and film for collection by an off-site recycler. Silver from fixer can also be reclaimed on-site using a recovery unit that is maintained by a service provider. Silver recovery units are simple, efficient, and cost-effective if properly maintained. Alternately, the fixer solution supplier or manufacturer may be able to take back used fixer as part of the purchasing agreement.



Disposing developer

Note: Undiluted developer is a hazardous waste and is corrosive; it must be disposed of properly. Used developer is not a hazardous waste and can be discharged to a sanitary drain with prior approval of the wastewater treatment authority. Dental facilities that have individual septic systems should not dispose of developer down the drain, as it can damage the septic system; contact an industrial wastewater disposal company for proper disposal.

Recycling lead waste

Lead is a hazardous metal that can contaminate soil and groundwater, if placed in regular garbage, and sent to a landfill. Lead waste is generated at dental offices in foil from intraoral film packets, and discarded lead aprons and collars. Lead foils can be collected and dropped off at a local recycler for free, or picked up by your recycling service. Once a lead apron is damaged or the collar is worn out and cannot be used, it can be recycled or sent to a dental charity for reuse. If you need new aprons for your office, consider lead-free aprons. For more information, check out the Lead-free X-ray Aprons resource sheet by PACE.

Questions you may ask before choosing a recycler...

- Do you accept chairside traps, vacuum filters, and extracted teeth for recycling?
- Do you provide a container for storage, pickup, or shipping of amalgam waste?
- What type of waste can be packaged together?
- Is disinfection required for amalgam waste?
- Does your company have an EPA or applicable state license?

Change to digital x-rays and lead-free aprons and your dental office can be lead and silver free

References:

- [1] Compliance Bulletin Hazardous Waste Photographic, X-Ray and Dental Wastes. Colorado Department of Public Health and Environment, August 2002. www.cdph.state.co.us/hm/photo.pdf
- [2] Directory of Dental Waste Recyclers. ADA, February 2005. www.ada.org/prof/resources/topics/topics_amalrecyclers.pdf
- [3] Environmental Best Management Practices, Guidelines for Dental Offices. Vermont Department of Environmental Conservation, July 2002. www.mercvt.org/dentalbmp.pdf

The contents of this resource sheet are accurate to the best knowledge of PACE staff. All references to products, processes, and services are for informational purposes only and do not represent an endorsement of any particular product or entity by the PACE Program. If you are a dental waste recycler and would like to be added to the list or to edit the listing, contact PACE at 303-441-1183.

Helpful Resources

See the PACE website for a list of helpful resource sheets

www.pacepartners.com

ADA

American Dental Association
www.ada.org



Naval Dental Research Institute
www.dentalmercury.com



PACE Contacts

Britt Faulkner

bfaulkner@bouldercounty.org
303-441-1183

Melissa Ellis (Longmont)

mellis@bouldercounty.org
303-441-1567

Erin Dodge

ecourtney@bouldercounty.org
303-441-1241

PACE Hotline 303-786-PACE (7223)